

WAAS CH 42931 W17A	APP CRS 174°	Rwy Idg TDZE 229 Apt Elev 229	5003
----------------------------------------	------------------------	---------------------------------------------------	-------------

RNAV (GPS) RWY 17

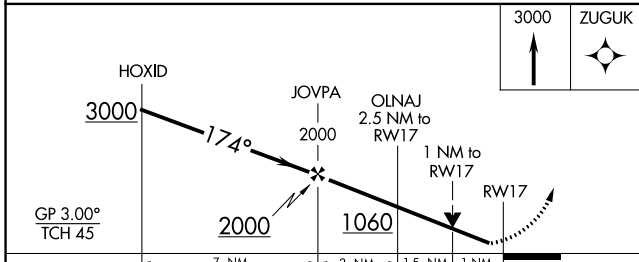
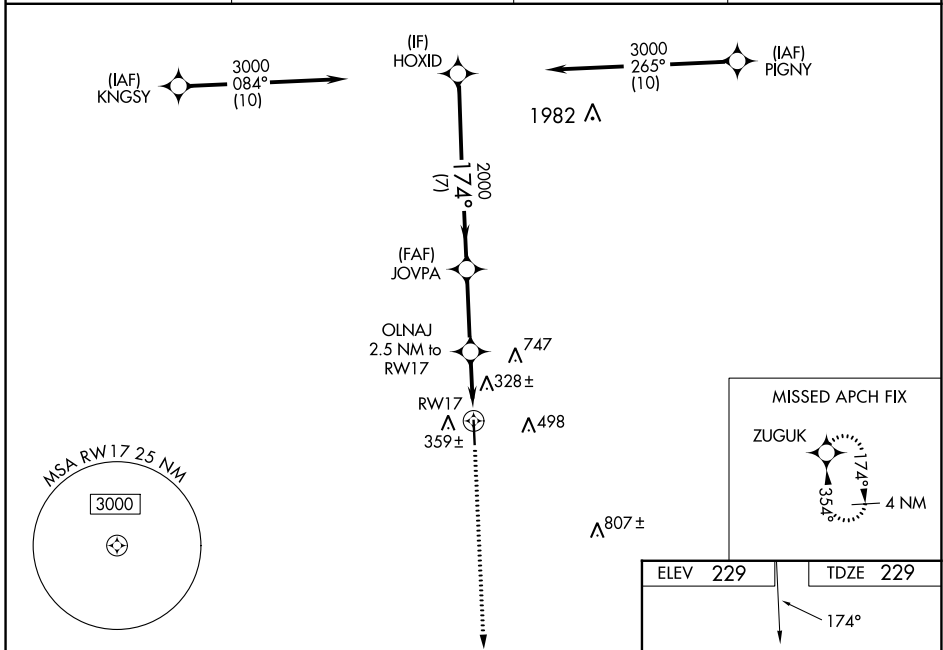
NAVASOTA MUNI (60R)

RNP APCH - GPS.

⚠ Rwy 17 helicopter visibility reduction below 3/4 NA. Baro-VNAV and VDP NA when using 11R altimeter setting. For uncompensated Baro-VNAV systems, LNAV/VNAV NA below -15C or above 54C. When local altimeter setting not received, use 11R altimeter setting and increase LPV DA to 529 feet and all visibilities 1/2 SM; increase LNAV/VNAV DA to 635 feet and all visibilities 1/2 SM; increase all MDAs 60 feet and LNAV visibility Cat C and D 1/2 SM.

MISSED APPROACH: Climb to 3000 direct ZUGUK and hold.

AWOS-3PT 120.925	HOUSTON APP CON 134.3 360.85	CTAF 122.9	123.3 0
----------------------------	----------------------------------------	----------------------	----------------



ELEV 229	TDZE 229
----------	----------

REIL Rwy 17 and 35
MIRL Rwy 17-35 0

CATEGORY	A	B	C	D
LPV DA		479-1	250 (300-1)	
LNAV/VNAV DA		585-1	356 (400-1)	
LNAV MDA		580-1	351 (400-1)	

SC-5, 26 DEC 2024 to 23 JAN 2025

SC-5, 26 DEC 2024 to 23 JAN 2025