

WAAS CH 73042 W36A	APP CRS 358°	Rwy Idg TDZE Apt Elev	4001 1226 1226
--	------------------------	-----------------------------	---

RNAV (GPS) RWY 36

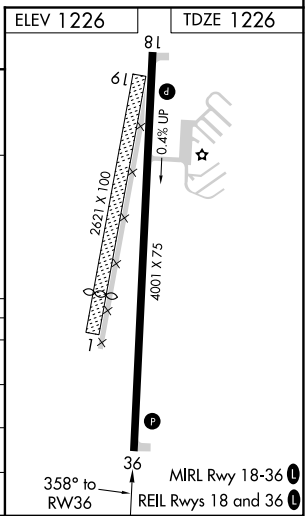
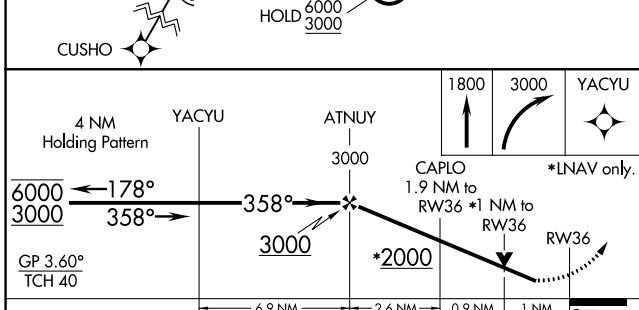
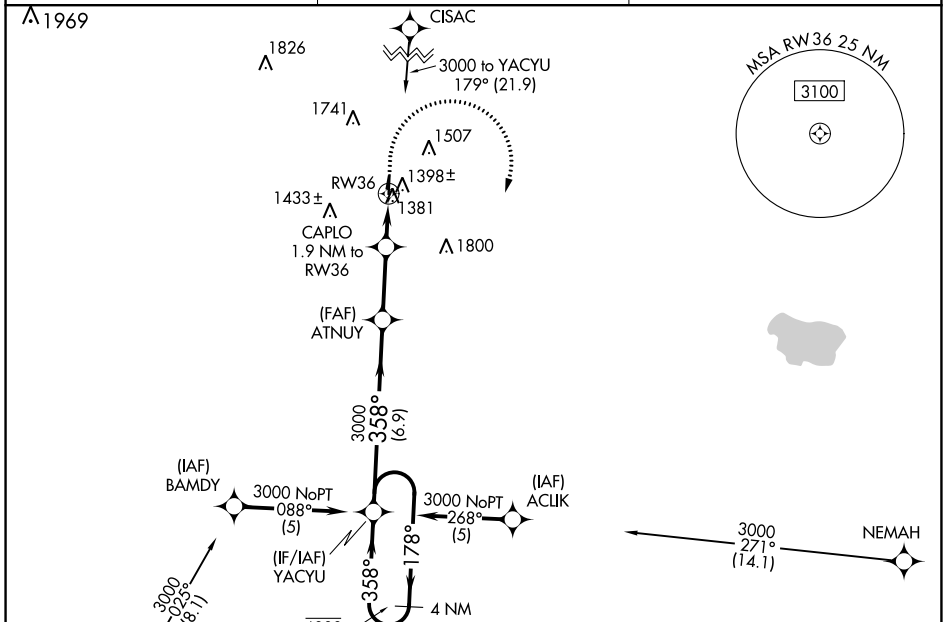
CHEROKEE COUNTY RGNL (CKP)

RNP APCH.

▼ Rwy 36 helicopter visibility reduction below 3/4 SM NA. Circling to Rwy 1-19 NA. Circling Rwy 18 NA at night.

MISSED APPROACH: Climb to 1800 then climbing right turn to 3000 direct YACYU and hold.

AWOS-3 119.225	MINNEAPOLIS CENTER 125.025 235.625	UNICOM 122.8 (CTAF) 0
--------------------------	--	---------------------------------



CATEGORY	A	B	C	D
LPV DA	1492-1	266 (300-1)		NA
LNAV/VNAV DA	1540-1	314 (400-1)		NA
LNAV MDA	1660-1	434 (500-1)		NA
◻ CIRCLING	1760-1 534 (600-1)	1820-1 594 (600-1)		NA

NC-3, 26 DEC 2024 to 23 JAN 2025

NC-3, 26 DEC 2024 to 23 JAN 2025