

APP CRS **190°**
 Rwy Idg **5201**
 TDZE **726**
 Apt Elev **726**

RNAV (GPS) RWY 19

JAMES A RHODES (JRO)

RNP APCH - GPS.

▼ Procedure NA at night.
▲ Rwy 19 helicopter visibility reduction below 1 SM NA.

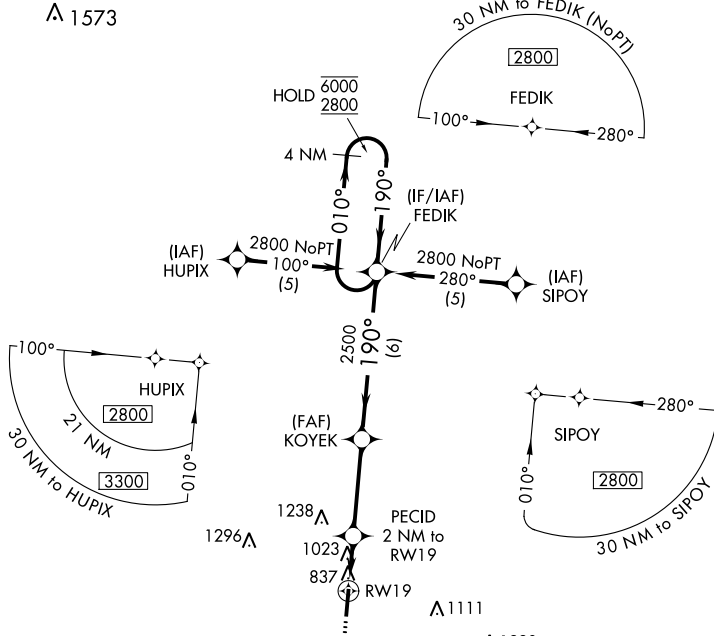
MISSED APPROACH: Climb to 2800 direct OSATE and hold.

AWOS-3PT
118.825

HUNTINGTON APP CON
128.4 270.1

UNICOM
122.7 (CTAF) 0

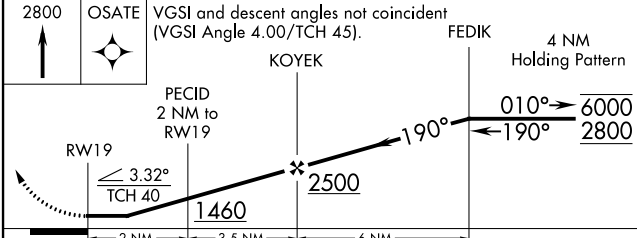
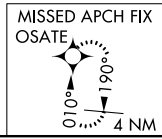
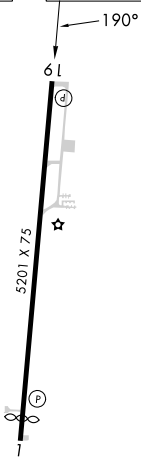
▲ 1573



EC-2, 26 DEC 2024 to 23 JAN 2025

EC-2, 26 DEC 2024 to 23 JAN 2025

ELEV 726 TDZE 726



CATEGORY	A	B	C	D
LNAV MDA	1280-1	554 (600-1)	1280-1½	554 (600-1½)
CIRCLING	1340-1 614 (700-1)	1480-1 754 (800-1)	1680-3	954 (1000-3)