

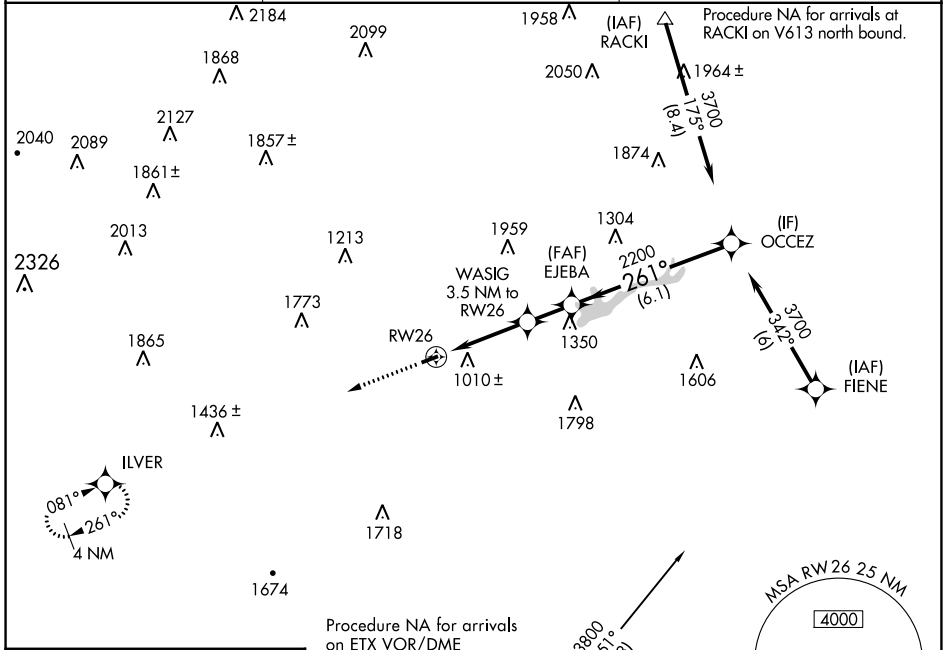
WAAS CH <b>53421</b> <b>W26A</b>	APP CRS <b>261°</b>	Rwy Idg TDZE Apt Elev <b>3000</b> <b>534</b> <b>534</b>
--	------------------------	--

**RNAV (GPS) RWY 26**  
JAKE ARNER MEML (22N)

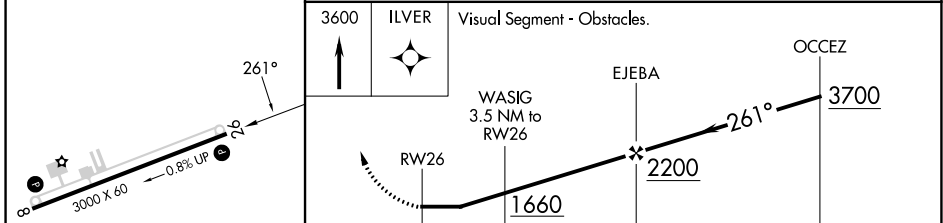
**⚠** DME/DME RNP-0.3 NA. When local altimeter setting not received, use Lehigh Valley Intl altimeter setting and increase all MDA 60 feet and LP and LNAV Cat A visibility ¼ mile. Helicopter visibility reduction below ¾ SM NA.

MISSED APPROACH: Climb to 3600 direct **ILVER** and hold.

AWOS-3PT **119.350**      ALLENTOWN APP CON **119.65 124.45 351.8**      UNICOM **123.05 (CTAF)**



ELEV 534	TDZE 534
----------	----------



CATEGORY	A	B	C	D
LP MDA	1380-1 846 (900-1)	1380-1¼ 846 (900-1¼)		NA
LNAV MDA	1380-1 846 (900-1)	1380-1¼ 846 (900-1¼)		NA
CIRCLING	1500-1¼ 966 (1000-1¼)	1780-1½ 1246 (1300-1½)		NA

NE-4, 26 DEC 2024 to 23 JAN 2025

NE-4, 26 DEC 2024 to 23 JAN 2025

MIRL Rwy 8-26 **Ⓢ**  
REIL Rws 8 and 26 **Ⓢ**