

BUFFALO, MINNESOTA

AL-6583 (FAA)

21336

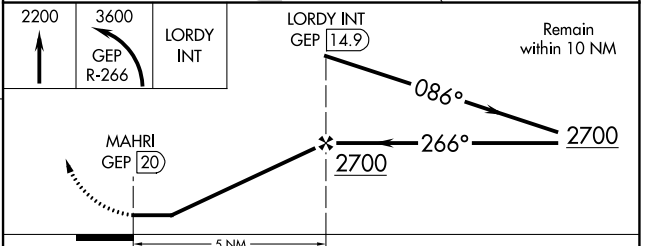
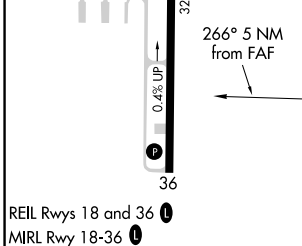
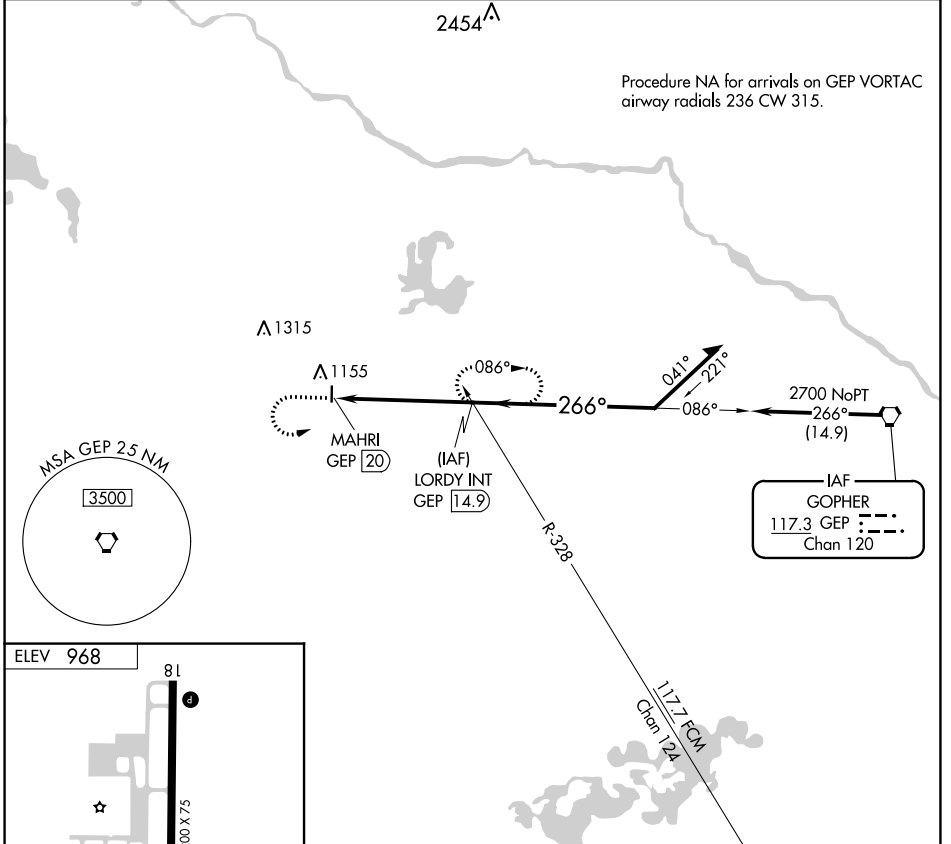
VORTAC GEP 117.3 Chan 120	APP CRS 266°	Rwy Idg TDZE Apt Elev	N/A N/A 968
---	------------------------	-----------------------------	--

VOR-A
BUFFALO MUNI (CFE)

⚠ When local altimeter setting not received, use Maple Lake altimeter setting. When VGSI inoperative, procedure NA at night.

MISSED APPROACH: Climb to 2200 then climbing left turn to 3600 via GEP VORTAC R-266 to LORDY INT/GEP VORTAC 14.9 DME and hold.

AWOS-3PT 120.45	MINNEAPOLIS APP CON 126.5 335.65	GCO 121.725	UNICOM 122.8 (CTAF) 0
---------------------------	--	-----------------------	--



FAF to MAP 5 NM					CATEGORY	A	B	C	D	
Knots	60	90	120	150	180	CIRCLING	1580-1	612 (700-1)	1580-1 ³ / ₄ 612 (700-1 ³ / ₄)	NA
Min:Sec	5:00	3:20	2:30	2:00	1:40					

BUFFALO, MINNESOTA
Orig-A 23APR20

45°10'N-93°51'W

BUFFALO MUNI (CFE)
VOR-A

NC-1, 26 DEC 2024 to 23 JAN 2025

NC-1, 26 DEC 2024 to 23 JAN 2025