

APP CRS	Rwy Idg	3304
012°	TDZE	40
	Apt Elev	41

RNAV (GPS) RWY 1

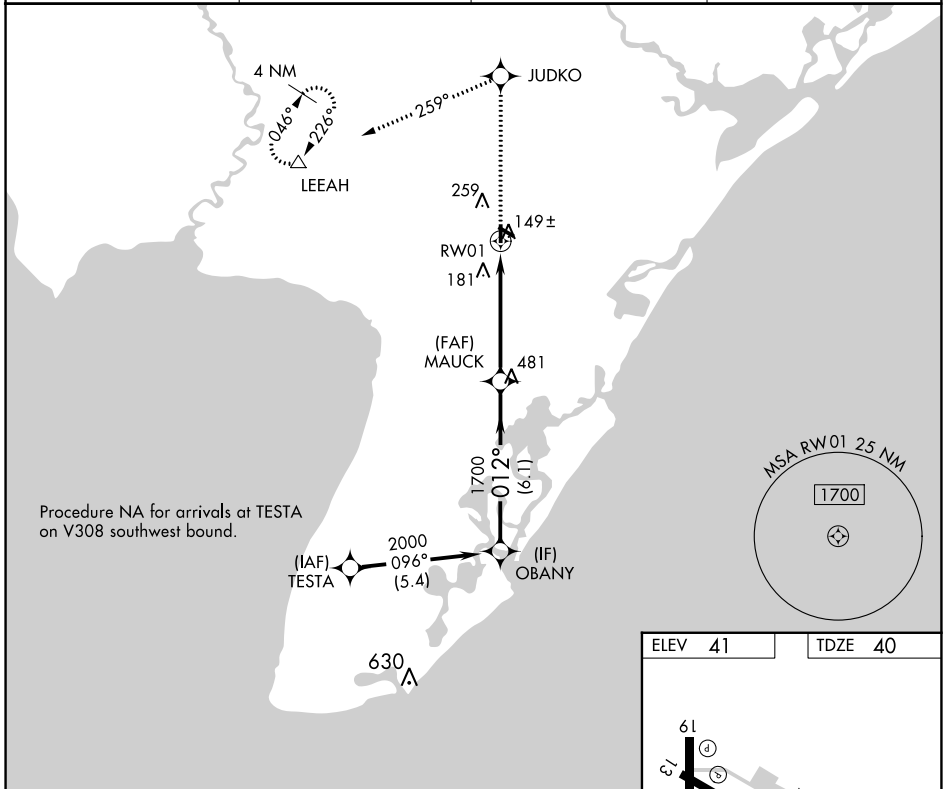
WOODBINE MUNI (OBI)

RNP APCH

NA When local altimeter setting not received, use Millville Muni altimeter setting and increase all MDA 60 feet, and increase LNAV and Circling Cat C visibility ¼ mile. VDP NA when using Millville Muni altimeter setting. Circling Rwy 13, 19, 31 NA at night. Rwy 1 helicopter visibility reduction below ¾ SM NA.

MISSED APPROACH: Climb to 2000 direct JUDKO and on track 259° to LEEAH and hold.

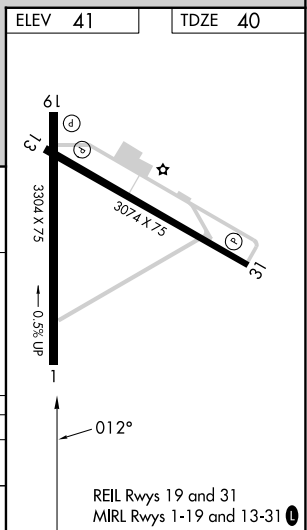
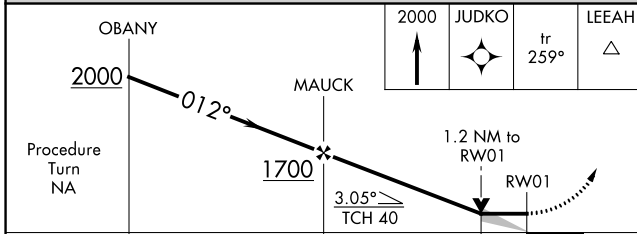
AWOS-3 120.475	ATLANTIC CITY APP CON 124.6 327.125	GCO 121.725	UNICOM 123.05 (CTAF) 0
--------------------------	---	-----------------------	----------------------------------



Procedure NA for arrivals at TESTA on V308 southwest bound.

NE-2, 26 DEC 2024 to 23 JAN 2025

NE-2, 26 DEC 2024 to 23 JAN 2025



CATEGORY	A	B	C	D
LNAV MDA	440-1	400 (400-1)	440-1½ 400 (400-1½)	NA
CIRCLING	620-1	579 (600-1)	620-1½ 579 (600-1½)	NA