

| | |
|------------------------|---------------------|
| APP CRS 192° | Rwy Idg 3304 |
| | TDZE 41 |
| | Apt Elev 41 |

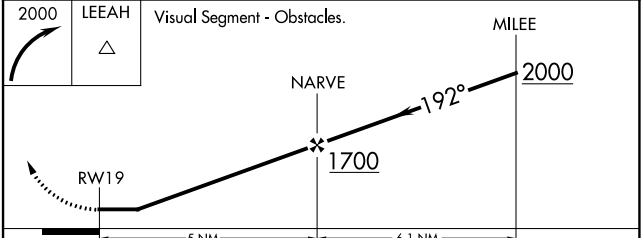
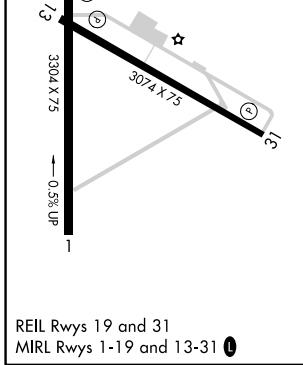
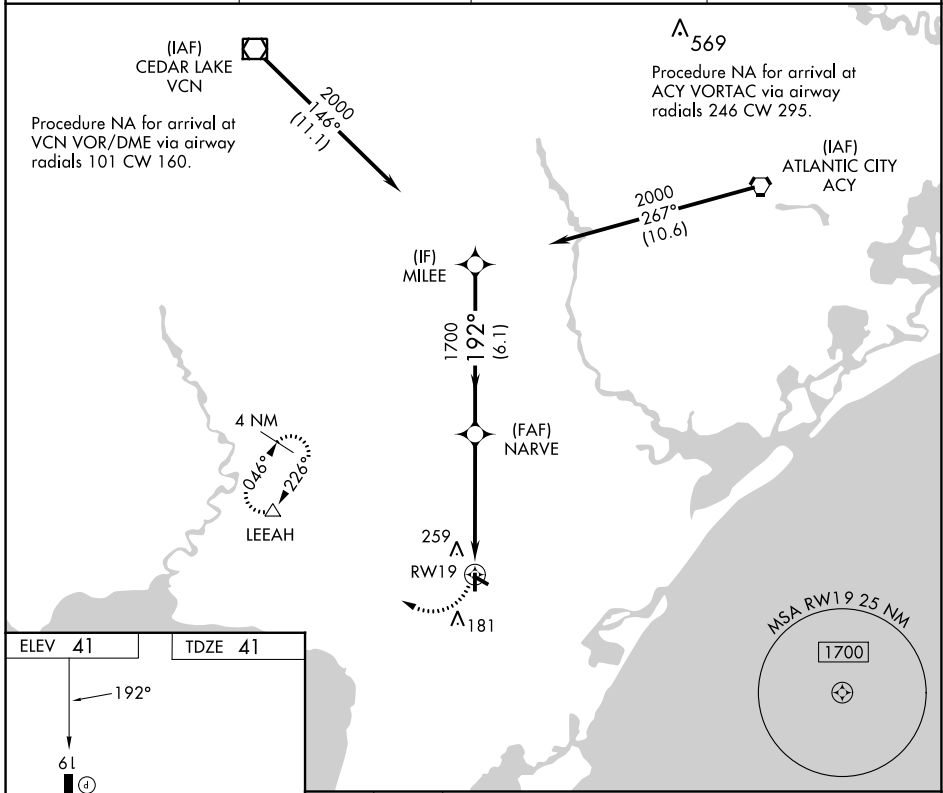
RNAV (GPS) RWY 19

WOODBINE MUNI (OBI)

NA Rwy 19 Straight-in and Circling and Circling to Rwy 13, 31 NA at night. Rwy 13, 19, 31 helicopter visibility reduction below 1 SM NA. DME/DME RNP-0.3 NA. When local altimeter setting not received, use Millville Muni altimeter setting; increase all MDA 60 feet, and increase LNAV Cat C visibility ¼ mile.

MISSED APPROACH: Climbing right turn to 2000 direct LEEAH and hold.

| | | | |
|--------------------------|---|-----------------------|---|
| AWOS-3 120.475 | ATLANTIC CITY APP CON 124.6 327.125 | GCO 121.725 | UNICOM 123.05 (CTAF) 0 |
|--------------------------|---|-----------------------|---|



| CATEGORY | A | B | C | D |
|----------|-------|-------------|------------------------|----|
| LNAV MDA | 500-1 | 459 (500-1) | 500-1¼ 459 (500-1¼) | NA |
| CIRCLING | 620-1 | 579 (600-1) | 620-1½ 579 (600-1½) | NA |

NE-2, 26 DEC 2024 to 23 JAN 2025

NE-2, 26 DEC 2024 to 23 JAN 2025