

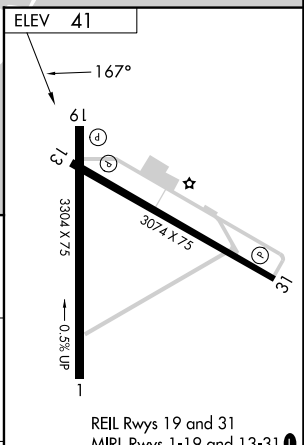
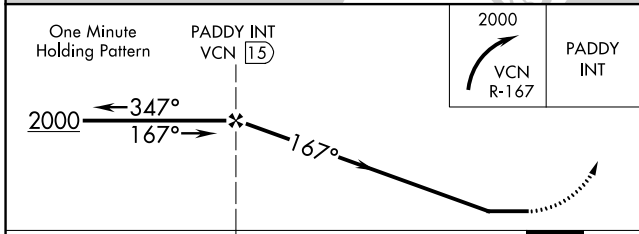
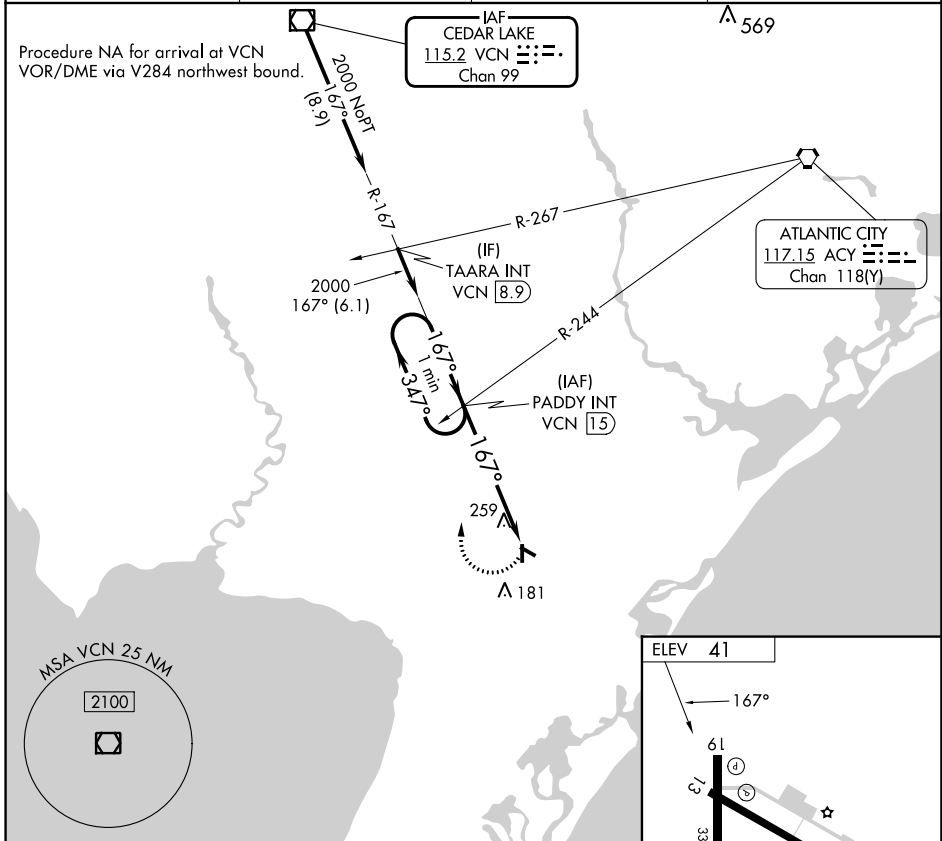
VOR/DME VCN 115.2 Chan 99	APP CRS 167°	Rwy Idg TDZE Apt Elev	N/A N/A 41
---	------------------------	-----------------------------	---------------------------------------

VOR-A
WOODBINE MUNI (OBI)

⚠ Circling Rwy 13, 19, 31 NA at night. Rwy 13, 19, 31 helicopter visibility reduction below 1 SM NA. When local altimeter setting not received, use Millville Muni altimeter setting; increase all MDA 60 feet and Cat C visibility ¼ mile.

⚠ MISSED APPROACH: Climbing right turn to 2000 on VCN VOR/DME R-167 to PADDY INT/VCN 15 DME and hold.

AWOS-3 120.475	ATLANTIC CITY APP CON 124.6 327.125	GCO 121.725	UNICOM 123.05 (CTAF)
--------------------------	---	-----------------------	--------------------------------



CATEGORY	A	B	C	D	FAF to MAP 5.4 NM					
CIRCLING	620-1 579 (600-1)	620-1¼ 579 (600-1¼)	620-1½ 579 (600-1½)	NA	Knots	60	90	120	150	180
					Min:Sec	5:24	3:36	2:42	2:10	1:48

NE-2, 26 DEC 2024 to 23 JAN 2025

NE-2, 26 DEC 2024 to 23 JAN 2025