

FORT CARSON, COLORADO

# RNAV (GPS) RWY 31

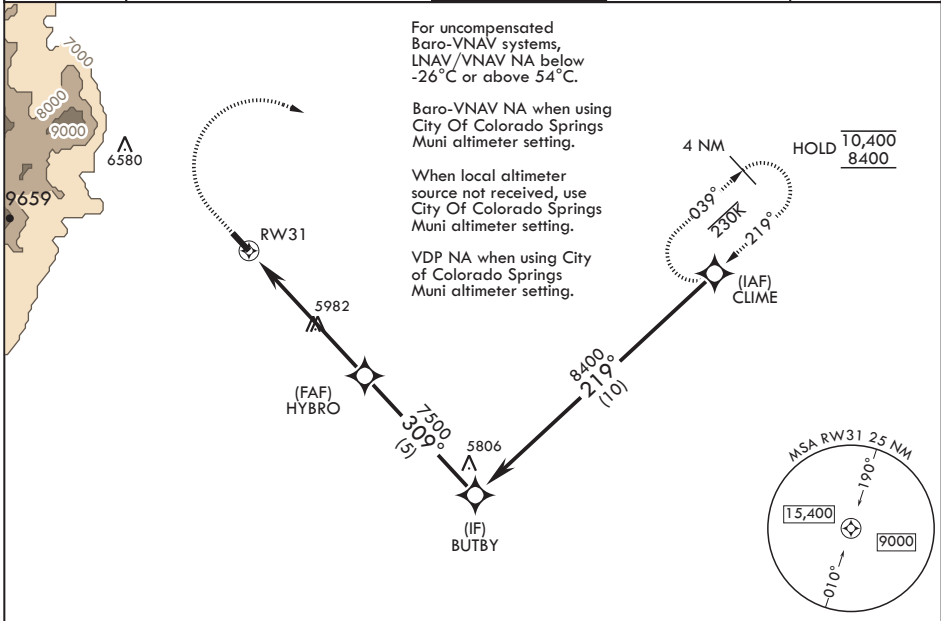
WAAS CH <b>43949</b> W31A	APCH CRS <b>309°</b>	Rwy ldg TDZE Arprt Elev	<b>4500</b> <b>5826</b> <b>5840</b>
---------------------------------	-------------------------	-------------------------------	---

- (USA)

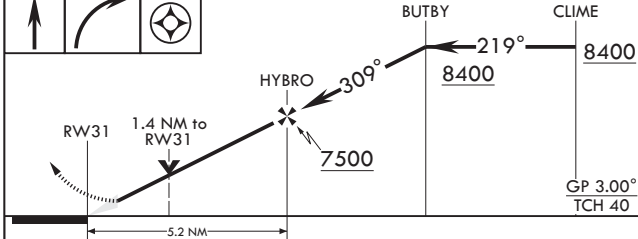
BUTTS AHP (FORT CARSON) (KFCS)

RNP APCH - GPS	MISSED APPROACH: Climb to 6400 then climbing right turn to 8400 direct CLIME and hold.
----------------	--

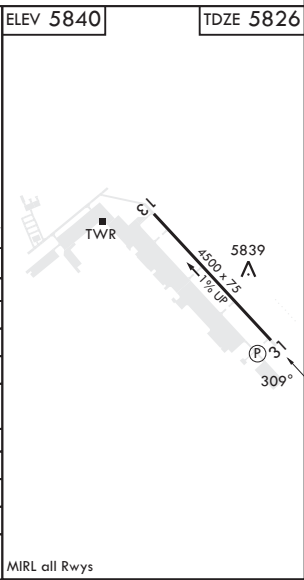
ATIS <b>108.8</b>	SPRINGS APP CON/DEP CON <b>124.0 257.875</b>	TOWER <b>125.5 229.4</b>	GND CON <b>118.55 253.6</b>	CLNC DEL <b>239.3</b>
----------------------	---	-----------------------------	--------------------------------	--------------------------



6400	8400	CLIME	ELEV 5840	TDZE 5826
------	------	-------	-----------	-----------



CATEGORY	A	B	C	D
LPV DA	6026-¾	200	(200-¾)	
LNAV/VNAV DA	6130-⅞	304	(300-⅞)	
LNAV MDA	6280-1	454 (500-1)	6280-1⅝	454 (500-1⅝)
<b>C</b> CIRCLING*	6280-1 406 (500-1)	6400-1 526 (600-1)	6580-2 706 (800-2)	6880-3 1006 (1100-3)
CITY OF COLORADO SPRINGS MUNI ALTIMETER SETTING MINIMUMS				
LPV DA	6089-⅞	263	(300-⅞)	
LNAV/VNAV DA	6193-1	367	(400-1)	
LNAV MDA	6360-1	534 (500-1)	6360-1½	534 (500-1½)
<b>C</b> CIRCLING*	6360-1 486 (500-1)	6480-1 606 (700-1)	6660-2¼ 786 (800-2¼)	6960-3 1086 (1100-3)



FORT CARSON, COLORADO 38°41'N - 104°46'W BUTTS AHP (FORT CARSON) (KFCS)

Orig 23FEB23

# RNAV (GPS) RWY 31

SW-1, 26 DEC 2024 to 23 JAN 2025

SW-1, 26 DEC 2024 to 23 JAN 2025