

WAAS CH 90344 W10A	APP CRS 103°	Rwy Idg TDZE Apt Elev	5000 3167 3167
--	------------------------	-----------------------------	---

RNAV (GPS) RWY 10

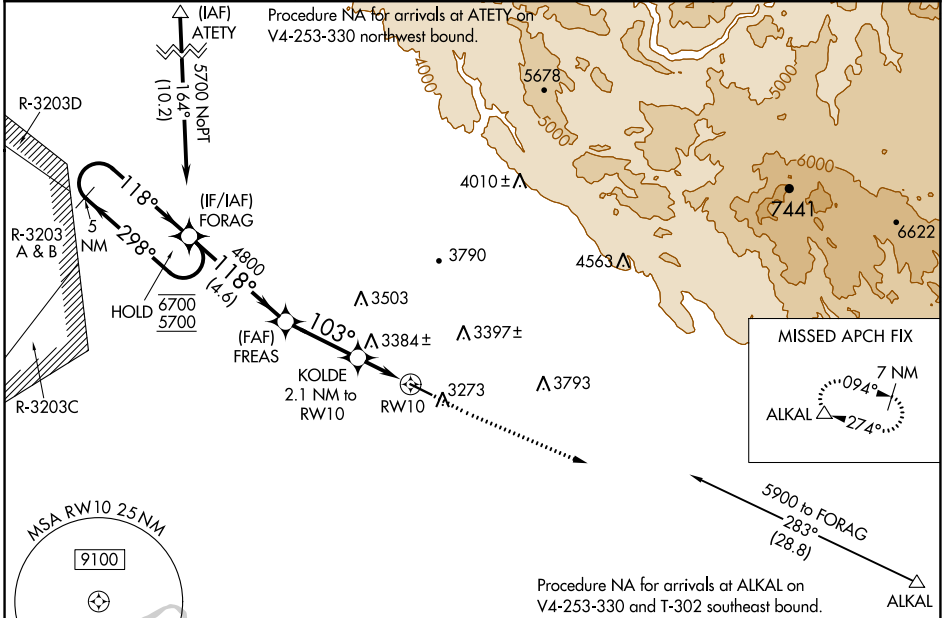
MOUNTAIN HOME MUNI (U76)

RNP APCH-GPS.

▼ Rwy 10 helicopter visibility reduction below 3/4 SM NA.
 ▲ NA Baro-VNAV NA. Hold-in-lieu NA when R-3203A/B/C/D is active. Use Mountain Home AFB altimeter setting.

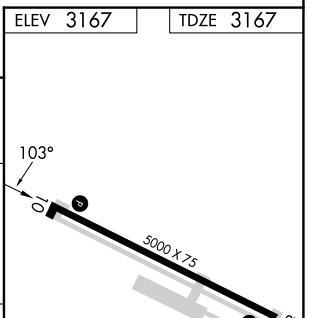
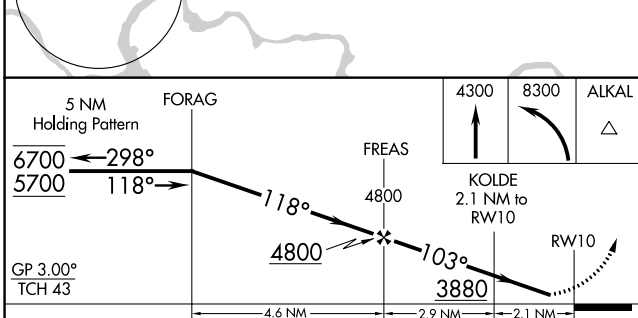
MISSED APPROACH: Climb to 4300 then climbing left turn to 8300 direct ALKAL and hold, continue climb-in-hold to 8300.

KMUO ATIS **273.5** MOUNTAIN HOME APP CON * **124.8 259.1** AUNICOM **122.8 (CTAF) 0**



NW-1, 26 DEC 2024 to 23 JAN 2025

NW-1, 26 DEC 2024 to 23 JAN 2025



CATEGORY	A	B	C	D
LPV DA		3460-7/8	293 (300-7/8)	
LNAV/VNAV DA		3604-1/4	437 (500-1/4)	
LNAV MDA	3680-1	513 (600-1)	3680-1 3/8	513 (600-1 3/8)
CIRCLING	3680-1 513 (600-1)	3780-1 613 (700-1)	3780-1 3/4 613 (700-3/4)	4180-3 1013 (1100-3)

REIL Rwy 10 and 28 0

MIRL Rwy 10-28 0