

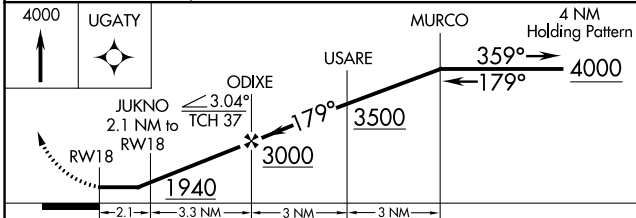
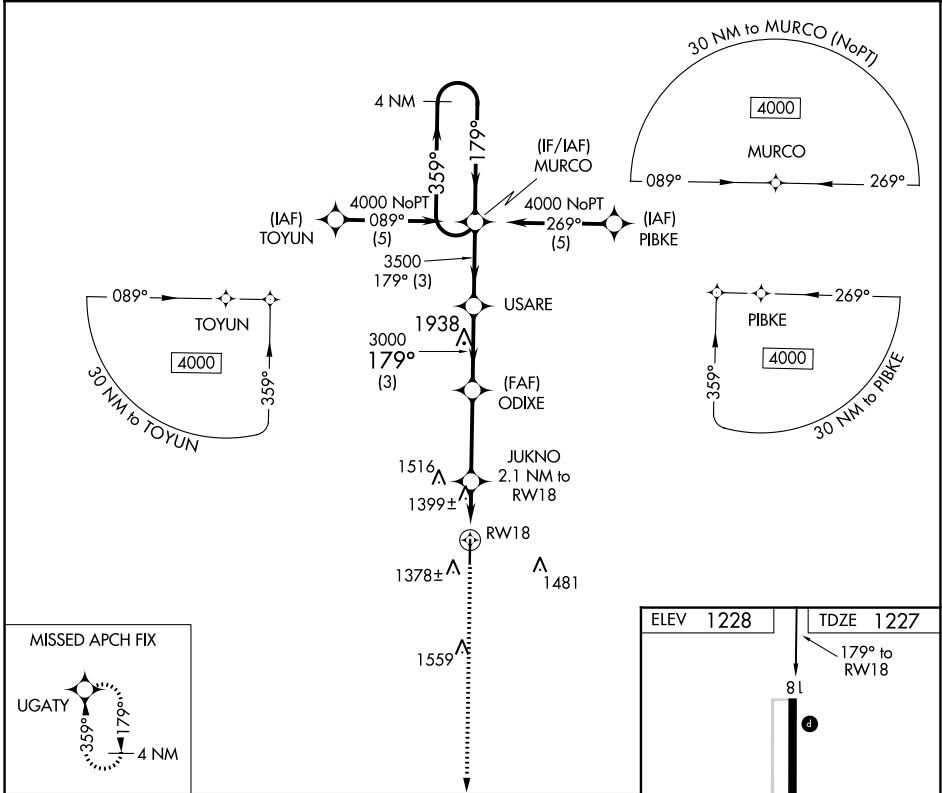
APP CRS	Rwy Idg	<b>5101</b>
<b>179°</b>	TDZE	<b>1227</b>
	Apt Elev	<b>1228</b>

# RNAV (GPS) RWY 18

WEST PLAINS RGNL (UNO)

RNP APCH - GPS.	<p>Visibility reduction by helicopters NA. When local altimeter setting not received, use Mountain Home, AR altimeter setting: increase all MDAs 140 feet and visibility LNAV Cat C ¼ SM and Circling Cat C ½ SM. When VGSI inop, Straight-in NA at night.</p>	<p>MISSED APPROACH: Climb to 4000 direct UGATY and hold.</p>

ASOS <b>123.825</b>	MEMPHIS CENTER <b>120.075 289.4</b>	UNICOM <b>122.8 (CTAF) 1</b>
------------------------	--	---------------------------------



ELEV 1228	TDZE 1227
-----------	-----------

The vertical scale diagram shows altitudes of 81, 36, and 5.2 X 10.15. A 179° heading is indicated to RWY 18. A star symbol is present above the scale.

CATEGORY	A	B	C	D
LNAV MDA	1660-1	433 (500-1)	1660-1¼ 433 (500-1¼)	NA
CIRCLING	1720-1 492 (500-1)	1740-1 512 (600-1)	1820-1½ 592 (600-1½)	NA

REIL Rwys 18 and 36 1  
MRL Rwy 18-36 1

NC-3, 26 DEC 2024 to 23 JAN 2025

NC-3, 26 DEC 2024 to 23 JAN 2025