

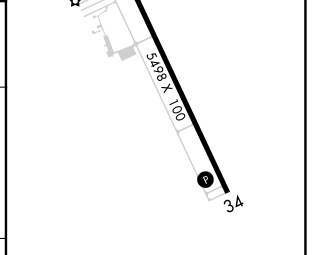
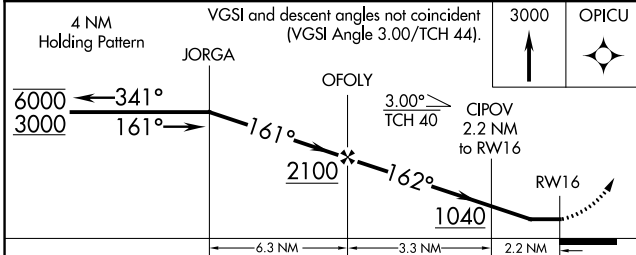
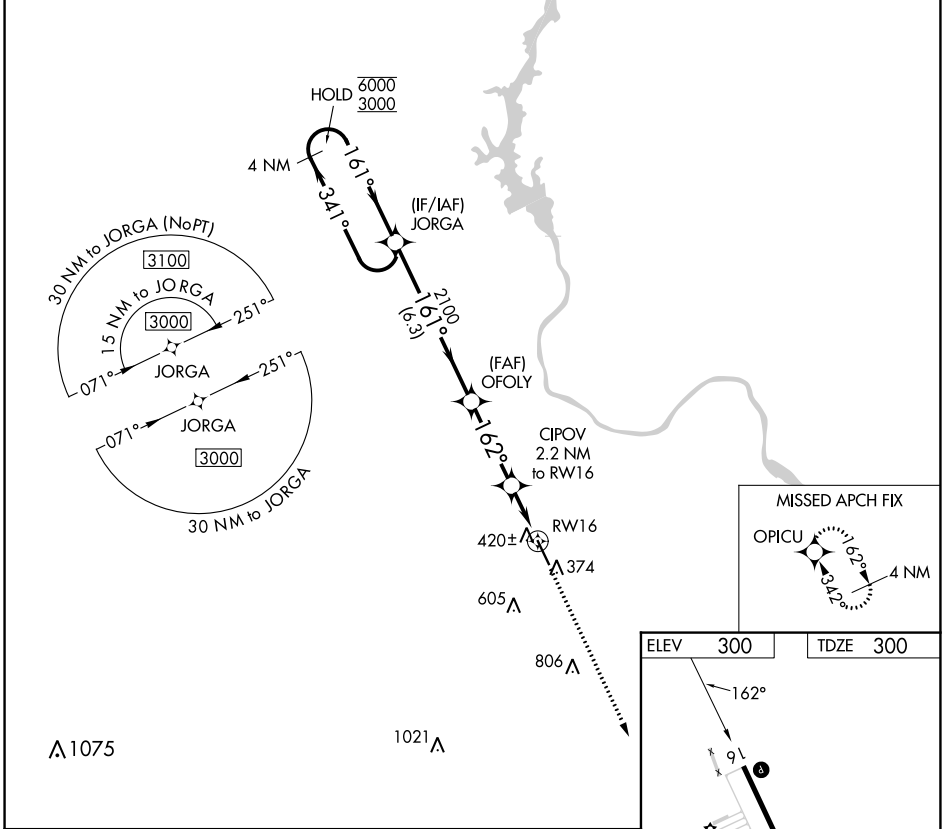
RNAV (GPS) RWY 16

ANSON COUNTY/JEFF CLOUD FLD (A/F P)

APP CRS	Rwy Idg	5498
162°	TDZE	300
	Apt Elev	300

RNP APCH - GPS.	Procedure NA at night. Rwy 16 helicopter visibility reduction below 1 SM NA.	MISSED APPROACH: Climb to 3000 direct OPICU and hold.
-----------------	---	---

AWOS-3 119.325	CHARLOTTE APP CON 120.05 307.8	UNICOM 122.8 (CTAF) 0
--------------------------	--	---------------------------------



CATEGORY	A	B	C	D
LNAV MDA		680-1	380 (400-1)	

MIRL Rwy 16-34 0

REIL Rws 16 and 34 0

SE-2, 26 DEC 2024 to 23 JAN 2025

SE-2, 26 DEC 2024 to 23 JAN 2025