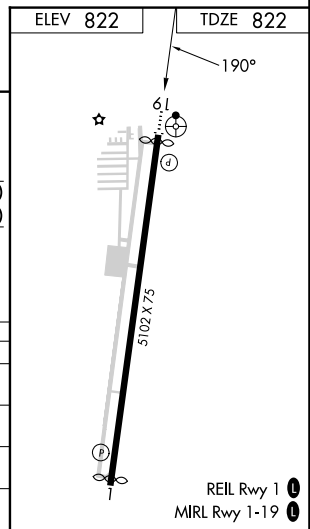
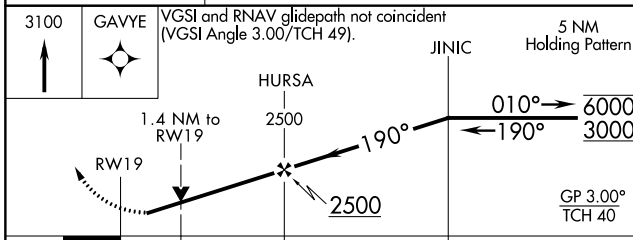
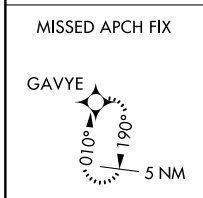
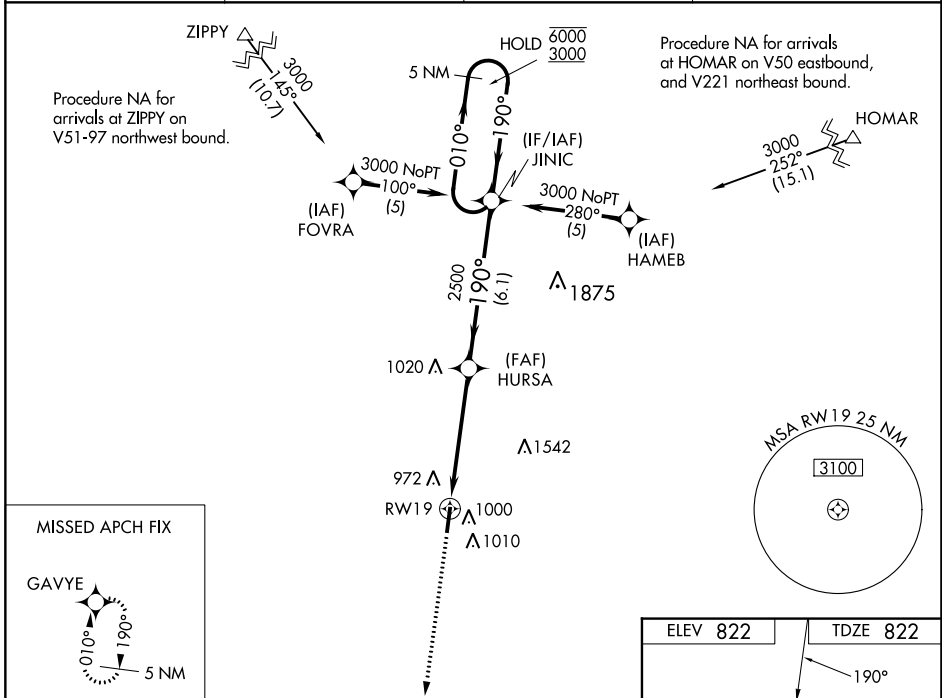


WAAS CH 53703 W19A	APP CRS 190°	Rwy Idg TDZE Apt Elev	5002 822 822
--	------------------------	-----------------------------	---

RNAV (GPS) RWY 19

INDY SOUTH GREENWOOD (HF'Y)

RNP APCH - GPS.		ODALS	MISSED APPROACH: Climb to 3100 direct GAVYE and hold.
<p>▼ Rwy 19 helicopter visibility reduction below 3/4 SM NA. ▲ For uncompensated Baro-VNAV systems, LNAV/VNAV NA below -16°C or above 54°C. Baro-VNAV and VDP NA when using Indianapolis Infil altimeter setting.</p>			
AWOS-3P 118.525	INDIANAPOLIS APP CON 124.95 317.8	GCO 121.725	UNICOM 123.0 (CTAF) 0



CATEGORY	A	B	C	D
LPV DA	1130-1 308 (400-1)			NA
LNAV/VNAV DA	1299-1 3/4 477 (500-1 3/4)			NA
LNAV MDA	1300-1 478 (500-1)		1300-1 3/8 478 (500-1 3/8)	NA
CIRCLING	1360-1 538 (600-1)	1380-1 558 (600-1)	1380-1 1/2 558 (600-1 1/2)	NA