

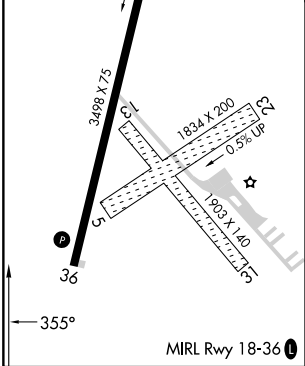
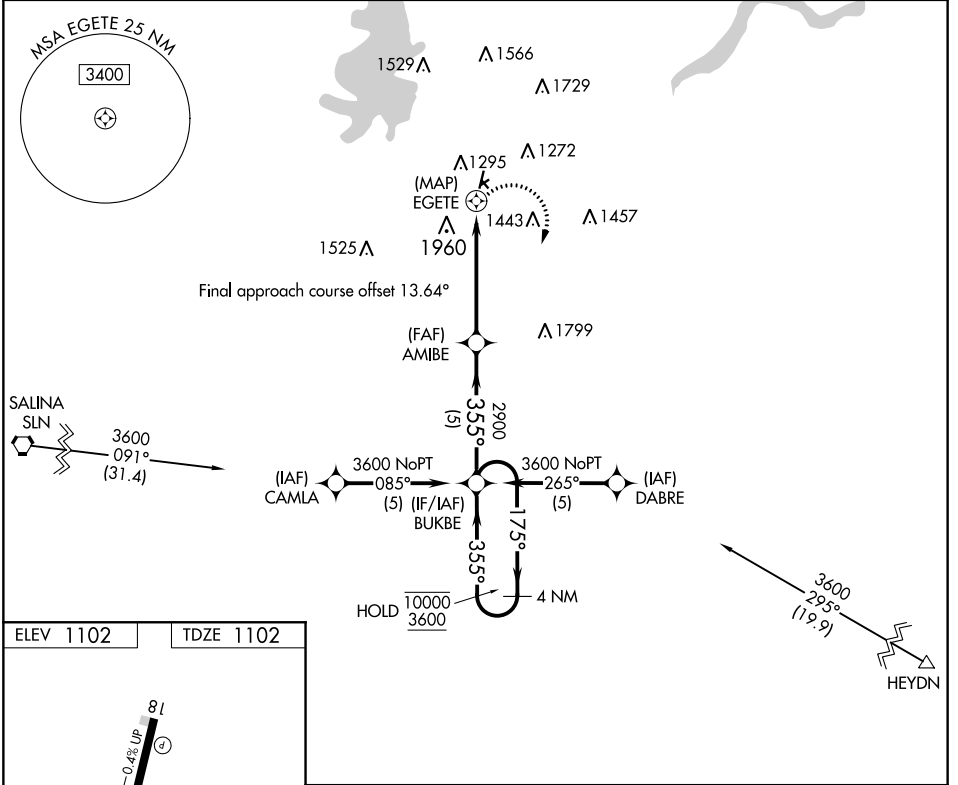
APP CRS	Rwy Idg	<b>3498</b>
<b>355°</b>	TDZE	<b>1102</b>
	Apt Elev	<b>1102</b>

# RNAV (GPS) RWY 36

FREEMAN FLD (3JC)

RNP APCH.	<p>⚠ Circling Rwy 5, 23, 13, 31 NA. Circling NA west of Rwy 18-36.</p> <p>⚠ NA Procedure NA at night. Rwy 36 helicopter visibility reduction below 1 SM NA. Use Marshall AAF, KS altimeter setting.</p>	MISSED APPROACH: Climbing right turn to 3600 direct BUKBE and hold.
-----------	---	---

MARSHALL AAF GCA*	UNICOM
<b>121.25 254.35</b>	<b>122.8 (CTAF) 0</b>



3600	BUKBE	Visual Segment - Obstacles.	BUKBE	4 NM Holding Pattern
	AMIBE		175°	10000
	EGETE		355°	3600
			2900	
			5.1 NM	5 NM
CATEGORY	A	B	C	D
LNAV MDA	21 20-1¼ 1018 (1100-1¼)	21 20-1½ 1018 (1100-1½)		NA
CIRCLING	21 20-1¼ 1018 (1100-1¼)	21 20-1½ 1018 (1100-1½)		NA

NC-2, 26 DEC 2024 to 23 JAN 2025

NC-2, 26 DEC 2024 to 23 JAN 2025