

LANETT, ALABAMA

AL-6620 (FAA)

24081

WAAS CH <b>90244</b> <b>W06A</b>	APP CRS <b>057°</b>	Rwy Idg TDZE Apt Elev	<b>5400</b> <b>615</b> <b>624</b>
--	------------------------	-----------------------------	---

# RNAV (GPS) RWY 6

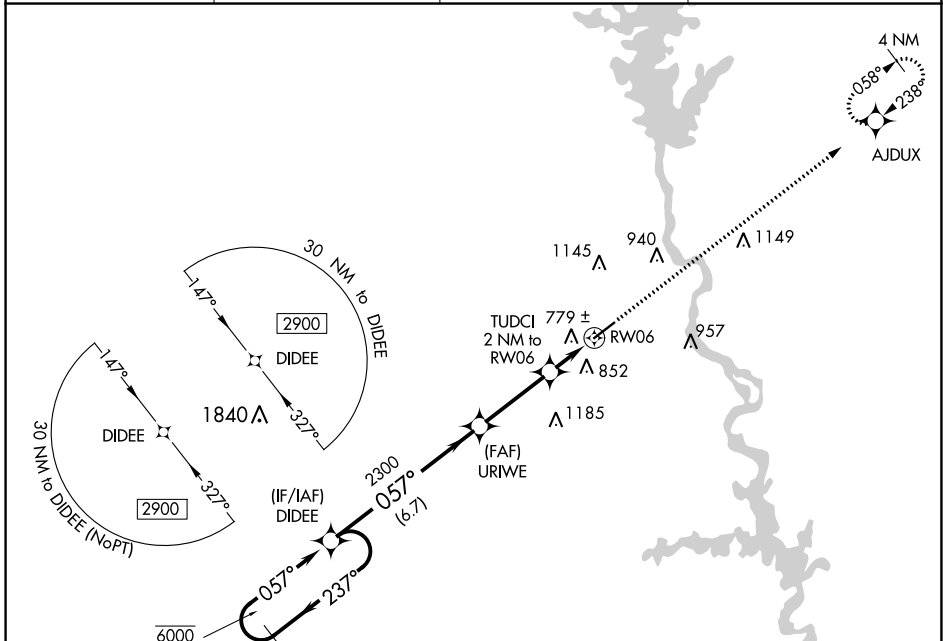
LANETT RGNL (7A3)

RNP APCH-GPS.

▼ Procedure NA at night. Baro-VNAV NA. Use LaGrange altimeter setting.  
▲ NA

MISSED APPROACH: Climb to 2800 direct AJDUX and hold.

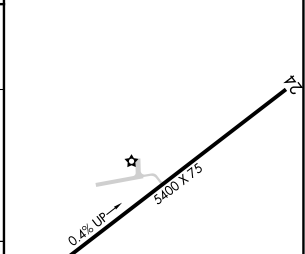
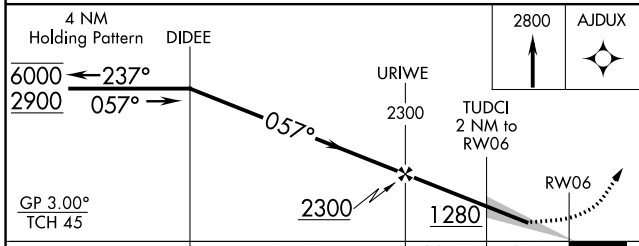
LGC AWOS-3 <b>126.325</b>	ATLANTA CENTER <b>120.45 298.85</b>	ATLANTA APP CON ★ <b>125.5 323.1</b>	UNICOM <b>122.8 (CTAF) ①</b>
------------------------------	--	---	---------------------------------



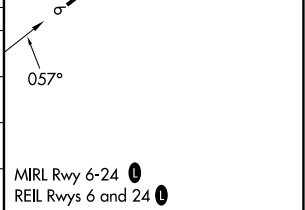
SE-4, 26 DEC 2024 to 23 JAN 2025

SE-4, 26 DEC 2024 to 23 JAN 2025

ELEV 624	TDZE 615
----------	----------



CATEGORY	A	B	C	D
LPV DA	956-1		341 (400-1)	
LNAV/VNAV DA	1094-1 $\frac{3}{8}$		479 (500-1 $\frac{3}{8}$ )	
LNAV MDA	1080-1	465 (500-1)	1080-1 $\frac{3}{8}$	465 (500-1 $\frac{3}{8}$ )
CIRCLING	1240-1	616 (700-1)	1620-3	996 (1000-3)



LANETT, ALABAMA  
Orig 27JAN22

32°49'N-85°14'W

# LANETT RGNL (7A3)

## RNAV (GPS) RWY 6