

WAAS CH <b>78233</b> <b>W03A</b>	APP CRS <b>039°</b>	Rwy Idg TDZE Apt Elev	<b>4000</b> <b>961</b> <b>963</b>
--	------------------------	-----------------------------	---

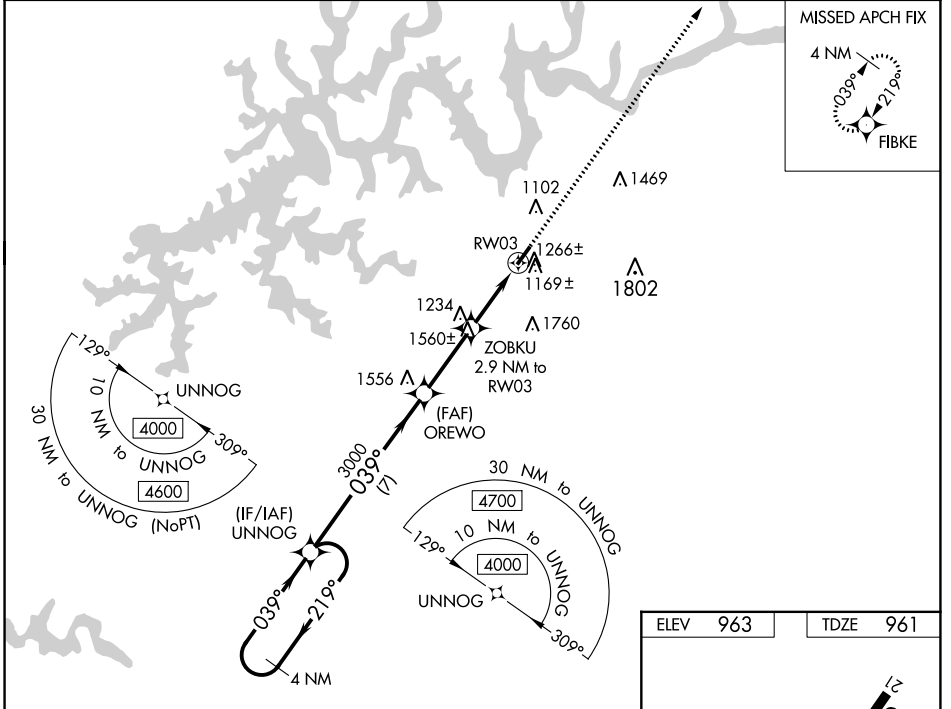
# RNAV (GPS) RWY 3

WAYNE COUNTY (EKQ)

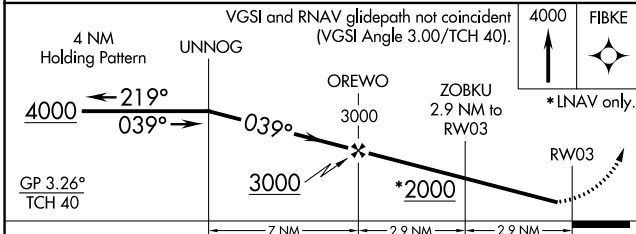
**⚠** Baro-VNAV NA when using Somerset altimeter setting. For uncompensated Baro-VNAV systems, LNAV/VNAV NA below -1.6°C (4°F) or above 54°C (130°F). DME/DME RNP-0.3 NA. Helicopter visibility reduction below 1 SM NA. When local altimeter setting not received, use Somerset altimeter setting and increase all DA 44 feet and all MDA 60 feet and increase LNAV/VNAV all Cats visibility ¼ mile. Rwy 3 Straight-in and Circling minimums NA at night.

**MISSED APPROACH:**  
Climb to 4000 direct FIBKE and hold.

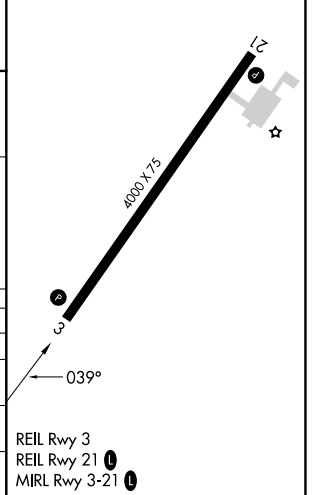
AWOS-3PT <b>118.825</b>	INDIANAPOLIS CENTER <b>124.625 371.925</b>	UNICOM <b>122.8 (CTAF)</b> <b>①</b>
----------------------------	---	--



ELEV 963	TDZE 961
----------	----------



CATEGORY	A	B	C	D
LPV DA	1233-1	272 (300-1)		NA
LNAV/VNAV DA	1410-1 3/8	449 (500-1 3/8)		NA
LNAV MDA	1520-1	559 (600-1)		NA
<b>ⓐ</b> CIRCLING	1780-1 1/4 817 (900-1 1/4)	1840-1 1/4 877 (900-1 1/4)		NA



REIL Rwy 3  
REIL Rwy 21 **①**  
MIRL Rwy 3-21 **①**

SE-1, 26 DEC 2024 to 23 JAN 2025

SE-1, 26 DEC 2024 to 23 JAN 2025