

VORTAC PKE <b>117.9</b> Chan <b>126</b>	APP CRS <b>067°</b>	Rwy Idg TDZE Apt Elev	<b>N/A</b> <b>N/A</b> <b>458</b>
---	------------------------	-----------------------------	--

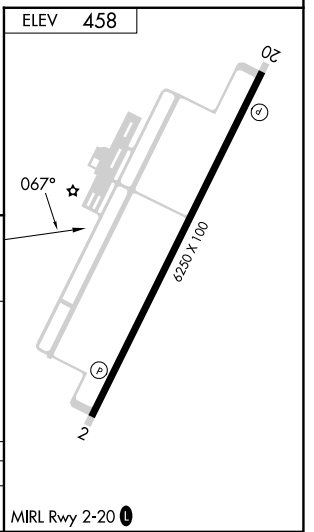
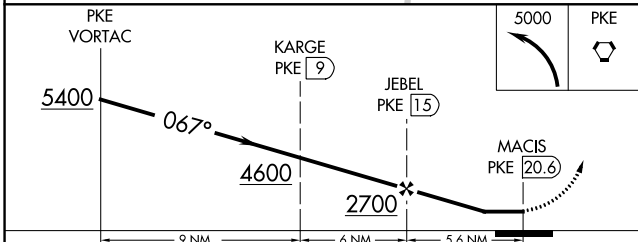
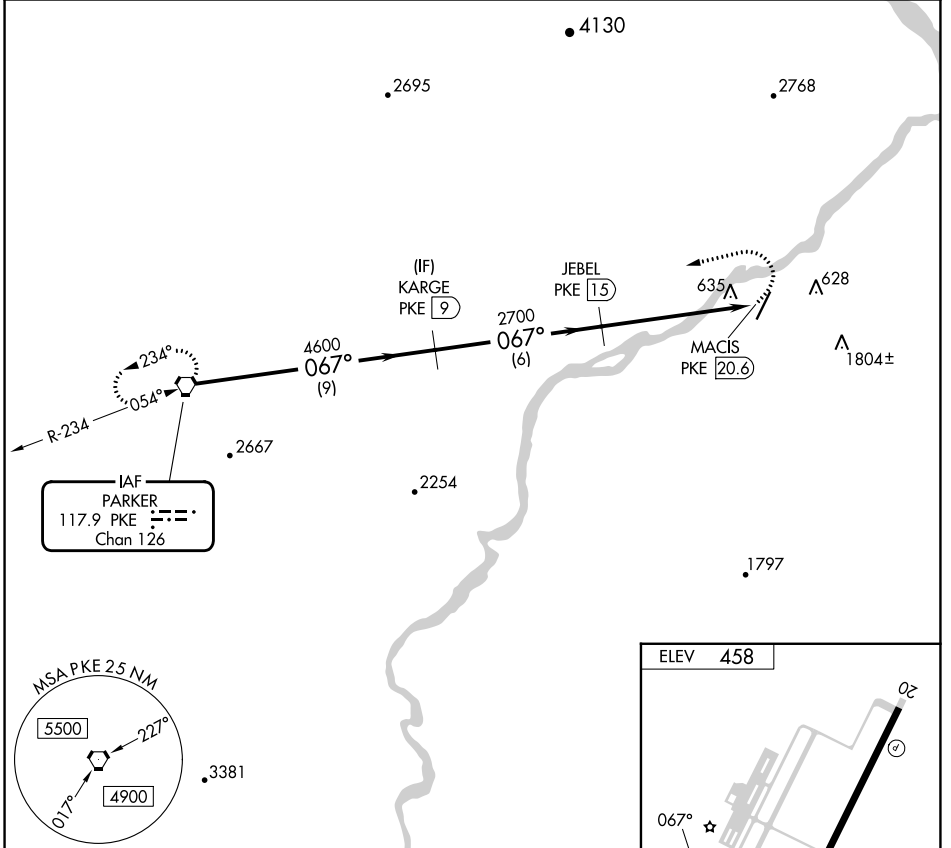
# VOR/DME-A

AVI SUQUILLA (P2 $\emptyset$ )

**V** When local altimeter setting not received, use Blythe altimeter setting and increase all MDA 100 feet.

**NA** MISSED APPROACH: Climbing left turn to 5000 direct PKE VORTAC and hold.

AWOS-3PT <b>132.75</b>	LOS ANGELES CENTER <b>128.15 285.6</b>	UNICOM <b>122.725 (CTAF)</b> $\emptyset$
---------------------------	---	---



CATEGORY	A	B	C	D
<b>C</b> CIRCLING	1900-1¼ 1442 (1500-1¼)	1900-1½ 1442 (1500-1½)	1900-3 1442 (1500-3)	NA

SW-4, 26 DEC 2024 to 23 JAN 2025

SW-4, 26 DEC 2024 to 23 JAN 2025