

APP CRS	Rwy Idg	5000
321°	TDZE	3727
	Apt Elev	3730

RNAV (GPS) RWY 32

HOLYOKE (HEQ)

RNP APCH-GPS.

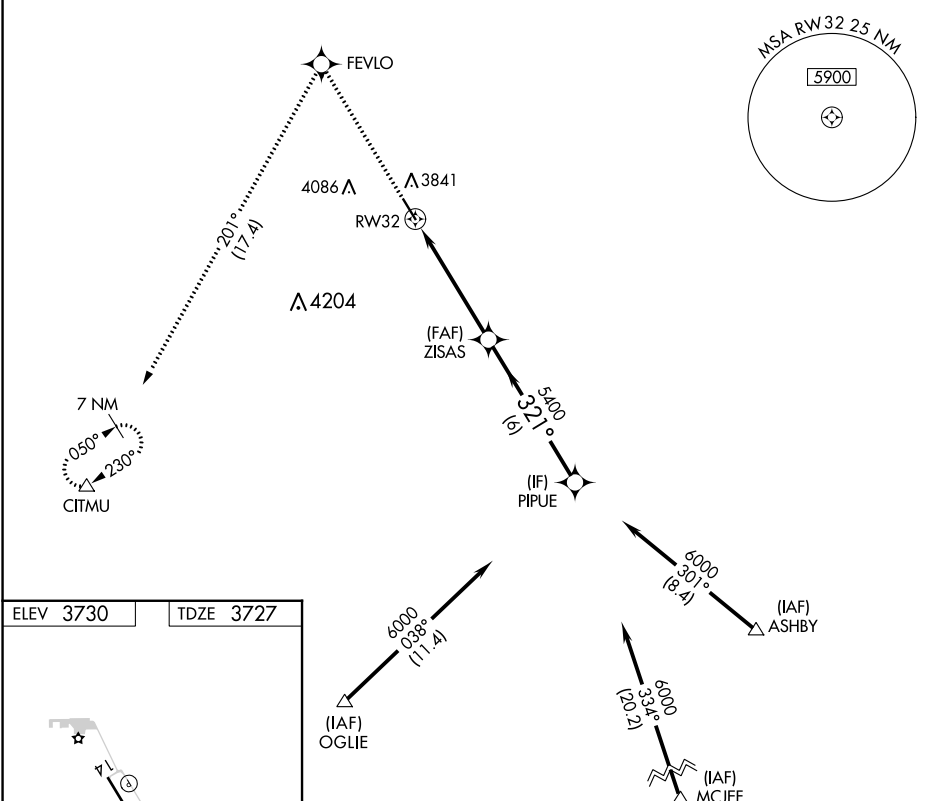
V VDP NA when using Sidney Muni/Lloyd W. Carr Fld altimeter setting.
A When local altimeter setting not received, use Sidney altimeter setting and increase all MDAs 200 feet and visibility Cat C/D $\frac{3}{8}$ SM. Rwy 32 helicopter visibility reduction below $\frac{3}{4}$ SM NA.

MISSED APPROACH: Climb to 6500
 direct FEVLO and on track 201° to
 CITMU and hold.

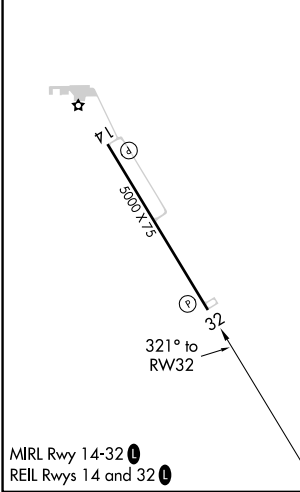
AWOS-3
119.275

DENVER CENTER
118.475 225.4

UNICOM
122.7 (CTAF) 0



ELEV 3730	TDZE 3727
-----------	-----------



6500	FEVLO	tr 201°	CITMU	PIPUE
				6000
		0.7 NM to RW32	ZISAS	
			5400	
		0.7 NM	4.4 NM	6 NM
CATEGORY	A	B	C	D
LNAV MDA	4160-1	433 (500-1)		4160-1¼ 433 (500-1¼)

SW-1, 26 DEC 2024 to 23 JAN 2025

SW-1, 26 DEC 2024 to 23 JAN 2025