

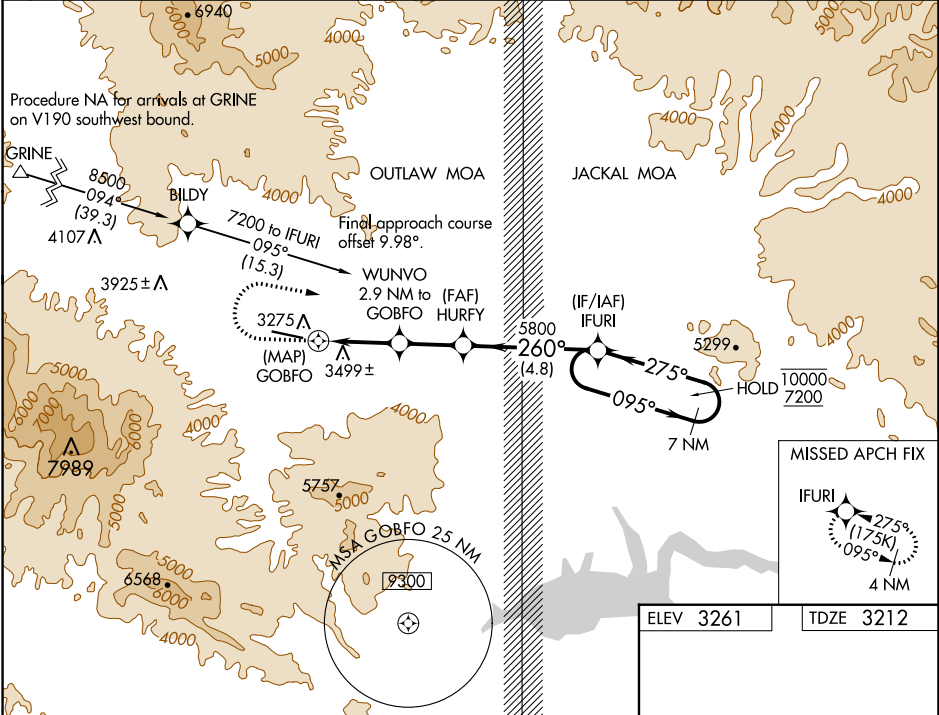
APP CRS	Rwy Idg	6500
260°	TDZE	3212
	Apt Elev	3261

RNAV (GPS) RWY 27

SAN CARLOS APACHE (P13)

RNP APCH.	MISSED APPROACH: (Do not exceed 175K until IFURI) Climb to 4600 then climbing right turn to 7200 direct IFURI and hold, do not exceed 230K when continuing climb-in-hold to 7200.
<p>▼ Rwy 27 helicopter visibility reduction below 3/4 SM NA.</p> <p>▲ NA VDP NA when using San Manuel altimeter setting. When local altimeter setting not received, use San Manuel altimeter setting and increase all MDA 120 feet.</p>	<p>* Missed approach requires minimum climb of 290 feet per NM to 5340.</p>

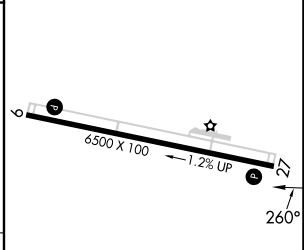
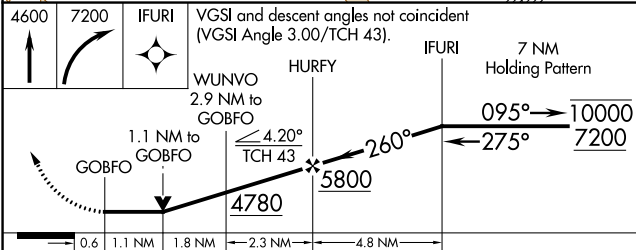
AWOS-3 120.075	ALBUQUERQUE CENTER 125.4 269.3	UNICOM 122.8 (CTAF) 0
--------------------------	--	---------------------------------



SW-4, 26 DEC 2024 to 23 JAN 2025

SW-4, 26 DEC 2024 to 23 JAN 2025

ELEV 3261	TDZE 3212
-----------	-----------



CATEGORY	A	B	C	D
LNAV MDA*	3760-1	548 (500-1)		NA
LNAV MDA	4180-1 1/4 968 (1000-1 1/4)	4180-1 1/2 968 (1000-1 1/2)		NA
CIRCLING	4180-1 1/4 919 (1000-1 1/4)	4180-1 1/2 919 (1000-1 1/2)		NA

MIRL Rwy 9-27 0

REIL Rws 9 and 27