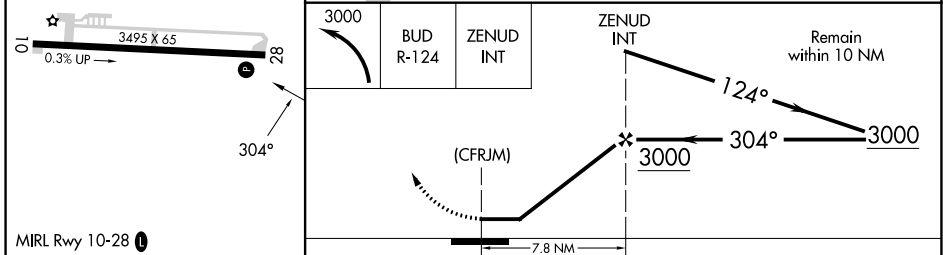
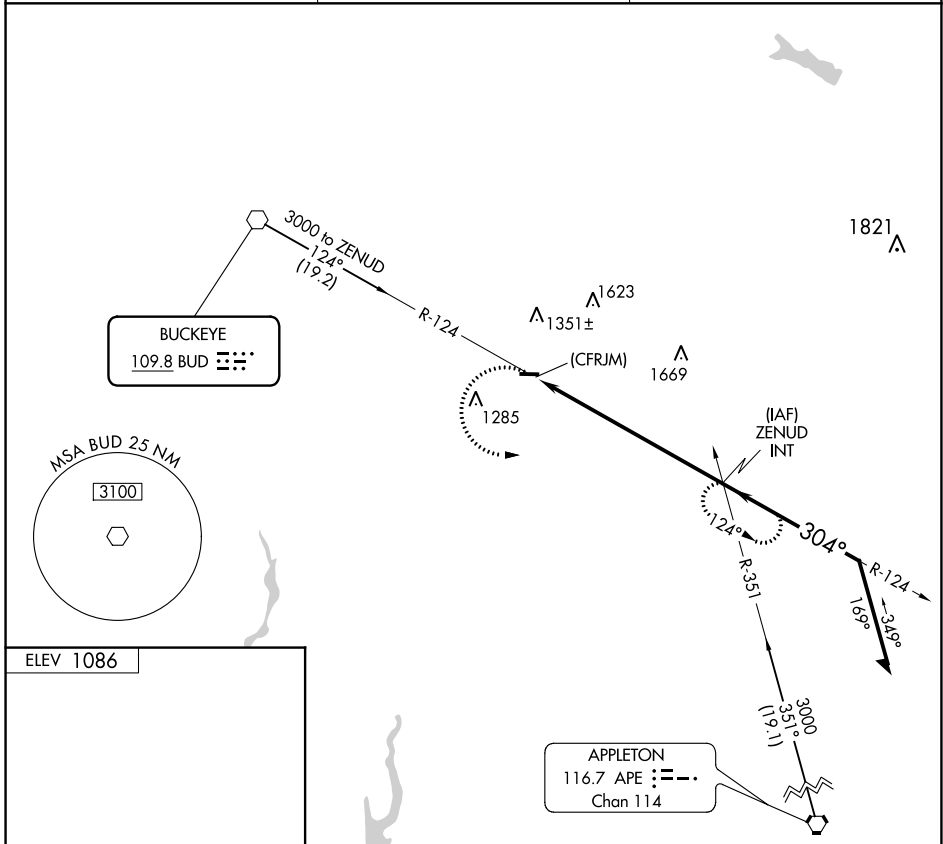


VOR BUD 109.8	APP CRS 304°	Rwy Idg TDZE Apt Elev	N/A N/A 1086
-------------------------	------------------------	-----------------------------	---

VOR-A
MORROW COUNTY (4I9)

▼ Circling Rwy 28 NA at night. Rwy 28 helicopter visibility reduction below 1 SM NA. Use Marion altimeter setting, when not received use Mansfield altimeter setting and increase all MDA 60 feet and all visibilities ¼ SM.
▲ NA MISSED APPROACH: Climbing left turn to 3000 on BUD VOR R-124 to ZENUD INT and hold.

MNN ASOS 119.975	COLUMBUS APP CON 125.95 317.775	UNICOM 122.8 (CTAF) 0
----------------------------	---	---------------------------------



FAF to MAP 7.8 NM						
Knots	60	90	120	150	180	
Min:Sec	7:48	5:12	3:54	3:07	2:36	
CATEGORY	A		B		C	D
C CIRCLING	1880-1		794 (800-1)		1940-2½ 854 (900-2½)	NA

EC-2, 26 DEC 2024 to 23 JAN 2025

EC-2, 26 DEC 2024 to 23 JAN 2025