

DALLAS THREE DEPARTURE  
(DALL3 TTT) 25JAN24

DALLAS, TEXAS  
MCKINNEY NTL (TKX)

LONE STAR DEP CON  
124.3 282.275  
CLINC DEL (When twr closed)  
121.35  
GND CON  
121.875  
MC KINNEY TOWER \*  
118.825 (CTAF)

RADAR and DME required.

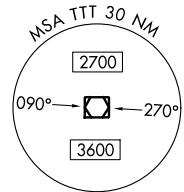
TAKEOFF MINIMUMS  
Rwys 18, 36: Standard.

TOP ALTITUDE:  
ASSIGNED BY ATC

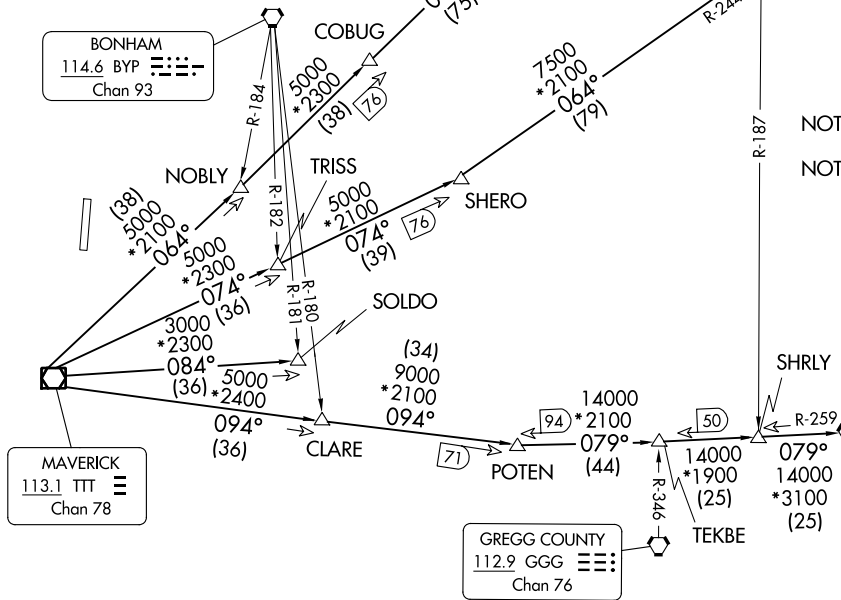
BONHAM  
114.6 BYP  
Chan 93

LITTLE ROCK  
113.9 LIT  
Chan 86

TEXARKANA  
116.3 TKX  
Chan 110



NOTE: BELCHER Transition: For aircraft inbound to the JAN, MLU, and SHV terminal areas only.  
NOTE: SOLDO Transition: ATC assigned.



MAVERICK  
113.1 TTT  
Chan 78

GREGG COUNTY  
112.9 GGG  
Chan 76

BELCHER  
117.4 EIC  
Chan 121



(DALL3 TTT) 24305  
DALLAS THREE DEPARTURE

AL-6644 (FAA)

MCKINNEY NTL (TKX)  
DALLAS, TEXAS

(CONTINUED ON FOLLOWING PAGE)

NOTE: Chart not to scale.

# DALLAS THREE DEPARTURE

DALLAS, TEXAS



## DEPARTURE ROUTE DESCRIPTION

When entering controlled airspace, fly assigned heading for RADAR vectors to appropriate route. Maintain ATC assigned altitude.

BELCHER TRANSITION (DALL3.EIC): From over TTT VOR/DME on TTT R-094 to POTEN, then on EIC R-259 to EIC VORTAC.

LITTLE ROCK TRANSITION (DALL3.LIT): From over TTT VOR/DME on TTT R-064 to ORTRO, then on LIT R-235 to LIT VORTAC.

SOLDO TRANSITION (DALL3.SOLDO): From over TTT VOR/DME on TTT R-084 to SOLDO.

TEXARKANA TRANSITION (DALL3.TXK): From over TTT VOR/DME on TTT R-074 to SHERO, then on TXK R-244 to TXK VORTAC.

SC-2, 26 DEC 2024 to 23 JAN 2025

SC-2, 26 DEC 2024 to 23 JAN 2025