

LOC/DME I-EFE 109.35 Chan 30(Y)	APP CRS 179°	Rwy Idg TDZE Apt Elev	7002 576 589
---	------------------------	-----------------------------	---

ILS or LOC RWY 18

MCKINNEY NTL (TKI)

DME required for procedure entry.
DME required.

▼ VDP NA when using Dallas Love Fld altimeter setting. When local altimeter setting not received, use Dallas Love Fld altimeter setting and increase all DA 70 feet and all MDA 80 feet, increase S-LOC 18 Cats C/D visibility 1/2 SM, increase Circling visibility Cat C 1/2 SM, Cat D 1/4 SM. For inop ALS, increase S-LOC 18 Cats C/D visibility to 1 SM. For inop ALS when using Dallas Love Fld altimeter setting, increase S-ILS 18 all Cats visibility to 1/2 SM and increase S-LOC 18 Cats C/D to 1 1/4 SM.

MALSRL

MISSED APPROACH:
Climb to 1500 then climbing left turn to 2400 on heading 360° and on TTT VOR/DME R-042 to BRDJE/TTT 41.5 DME and hold.

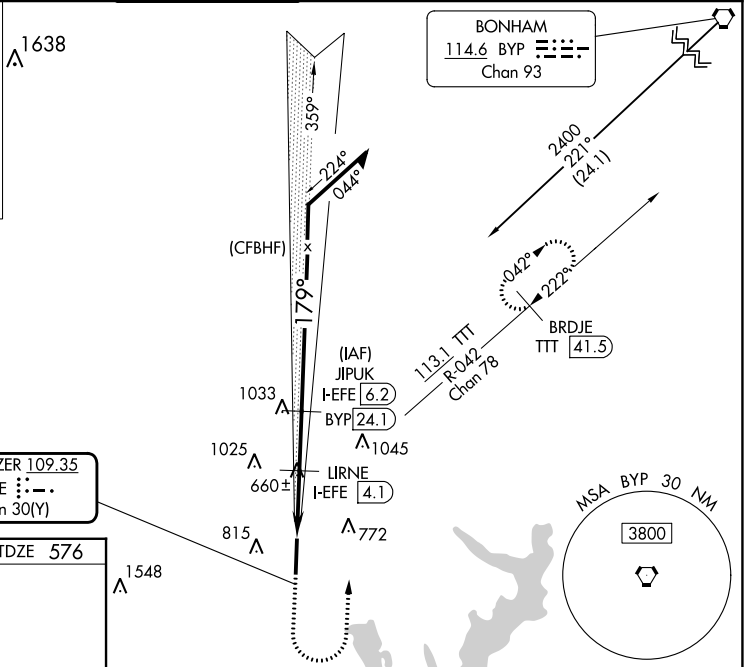
ATIS 119.925	LONE STAR APP CON 124.3 282.275	MCKINNEY TOWER ★ 118.825 (CTAF) 0	GND CON 121.875	CLNC DEL 121.35 (When twr closed)	UNICOM 122.95
------------------------	---	---	---------------------------	--	-------------------------

ALTERNATE MISSED APCH FIX

BONHAM
BYP 114.6
Chan 93

R-024
204°
024°

1638



LOCALIZER 109.35
I-EFE Chan 30(Y)

ELEV 589 TDZE 576

179°

81

AS

7002 X 150

TWR 620

36

1548

1500	2400	TTT R-042	BRDJE TTT 41.5	JIPIUK I-EFE 6.2	Remain within 10 NM
------	------	-----------	----------------	------------------	---------------------

*LOC only.

179°

359°

2400

2100

2100

1420*

179°

GS 3.00° TCH 53

I-EFE 1.6

*I-EFE 2.5

LIIRNE I-EFE 4.1

0.9

1.6

2.1 NM

HIRL Rwy 18-36

FAF to MAP 4.6 NM

Knots	60	90	120	150	180
Min:Sec	4:37	3:05	2:19	1:51	1:32

CATEGORY	A	B	C	D
S-ILS 18	776-1/2 200 (200-1/2)			
S-LOC 18	920-1/2	344 (400-1/2)	920-5/8	344 (400-5/8)
CIRCLING	1040-1 451 (500-1)	1120-1 531 (600-1)	1200-1 3/4 611 (700-1 3/4)	1380-2 1/2 791 (800-2 1/2)

SC-2, 26 DEC 2024 to 23 JAN 2025

SC-2, 26 DEC 2024 to 23 JAN 2025