

WAAS CH <b>87102</b> W18A	APP CRS <b>179°</b>	Rwy Idg TDZE Apt Elev	<b>7002</b> <b>576</b> <b>589</b>
---------------------------------	------------------------	-----------------------------	---

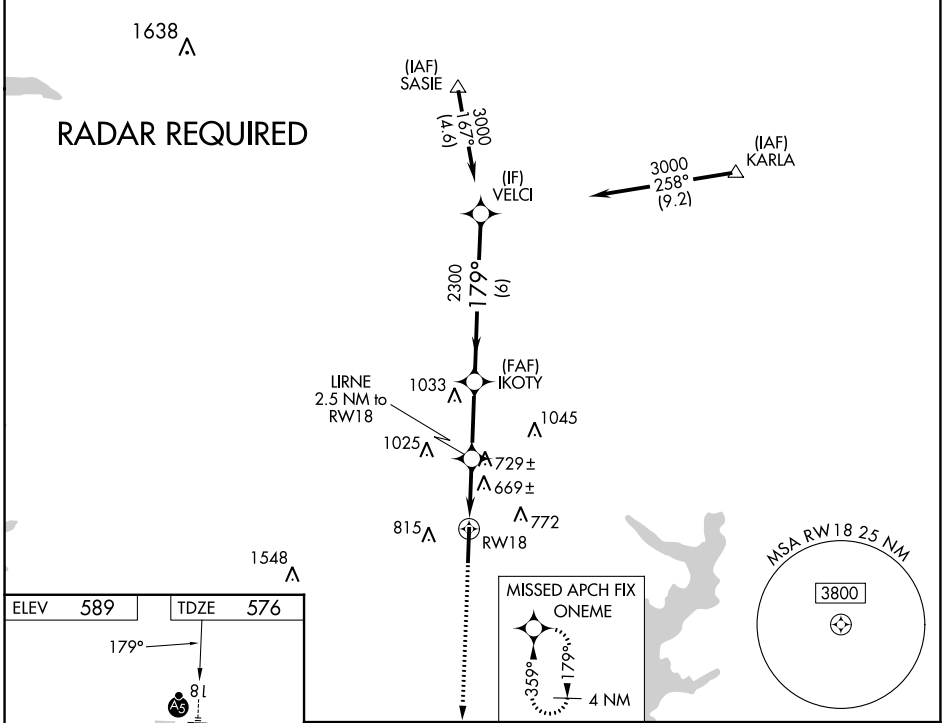
# RNAV (GPS) RWY 18

MCKINNEY NTL (TKI)

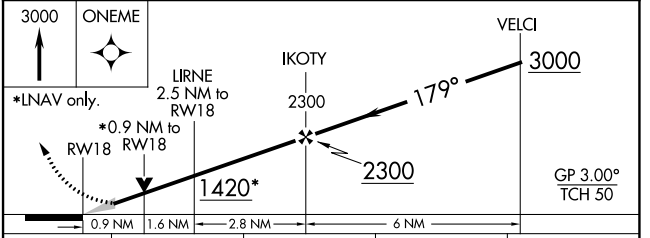
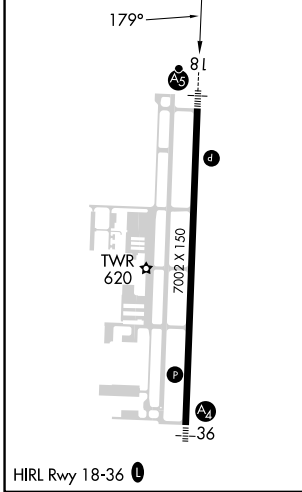
**⚠** DME/DME RNP-0.3 NA. VDP NA with Dallas Love Fld altimeter setting. When local altimeter setting not received, use Dallas Love Fld altimeter setting and increase all DA 70 feet and all MDA 80 feet, increase LNAV Cats C and D 1/8 mile, and Circling Cats C and D visibility 1/2 mile. For inop MALS when using Dallas Love Fld altimeter setting increase LPV all Cats visibility to 1 mile.

**MALS**  
 MISSED APPROACH: Climb to 3000 direct ONEME and hold.

ATIS <b>119.925</b>	LONE STAR APP CON <b>124.3 282.275</b>	MC KINNEY TOWER ★ <b>118.825</b> (CTAF) <b>0</b>	GND CON <b>121.875</b>	CLNC DEL <b>121.35</b> (When twr closed)	UNICOM <b>122.95</b>
------------------------	---	---	---------------------------	--	-------------------------



ELEV 589	TDZE 576
----------	----------



CATEGORY	A	B	C	D
LPV DA	776-1/2		200 (200-1/2)	
LNAV MDA	920-1/2	344 (400-1/2)	920-5/8	344 (400-5/8)
<b>C</b> CIRCLING	1040-1 451 (500-1)	1120-1 531 (600-1)	1200-1 3/4 611 (700-1 3/4)	1380-2 1/2 791 (800-2 1/2)