

VORTAC BYP <b>114.6</b> Chan <b>93</b>	APP CRS <b>214°</b>	Rwy ldg TDZE Apt Elev <b>N/A</b> <b>589</b>
--	------------------------	--

**VOR/DME-A**  
MCKINNEY NTL (TKI)

**⚠** When local altimeter setting not received use Dallas Love Fld altimeter setting and increase all MDA 80 feet and Cats C and D visibility 1/4 mile.

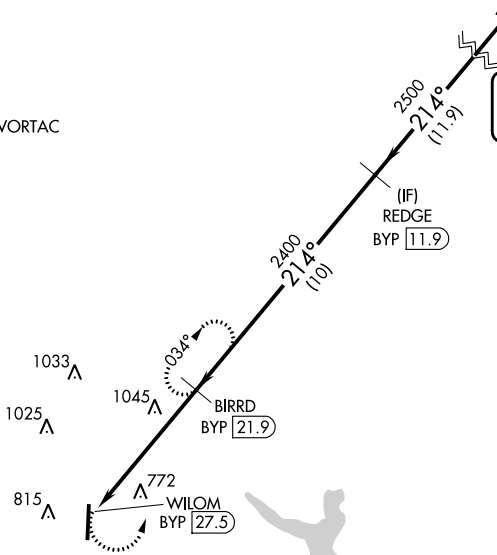
MISSED APPROACH: Climbing left turn to 2400 on BYP VORTAC R-214 to BIRRD/BYP 21.9 DME and hold.

ATIS <b>119.925</b>	LONE STAR APP CON <b>124.3 282.275</b>	MCKINNEY TOWER ★ <b>118.825</b> (CTAF) <b>0</b>	GND CON <b>121.875</b>	CLNC DEL <b>121.35</b> (When twr closed)	UNICOM <b>122.95</b>
------------------------	---	--	---------------------------	--	-------------------------

△ 1638

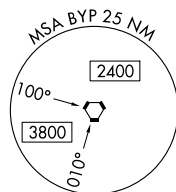
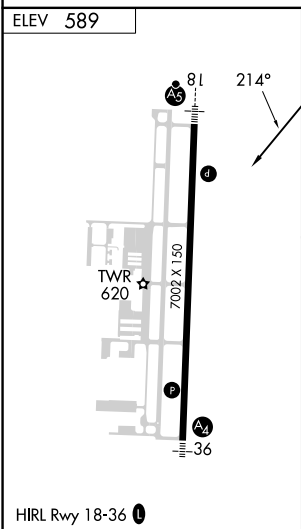
Procedure NA for arrivals on BYP VORTAC airway radials 173 CW 264.

IAF  
BONHAM  
114.6 BYP Chan 93



SC-2, 26 DEC 2024 to 23 JAN 2025

SC-2, 26 DEC 2024 to 23 JAN 2025



	2400 BIRRD BYP 21.9	2400 WILOM BYP 27.5	2500 BIRRD BYP 21.9	2500 REDGE BYP 11.9	2500 BYP VORTAC
	5.6 NM		10 NM		11.9 NM
CATEGORY	A	B	C	D	
<b>C</b> CIRCLING	1360-1 771 (800-1)	1360-1¼ 771 (800-1¼)	1360-2¼ 771 (800-2¼)	1380-2½ 791 (800-2½)	