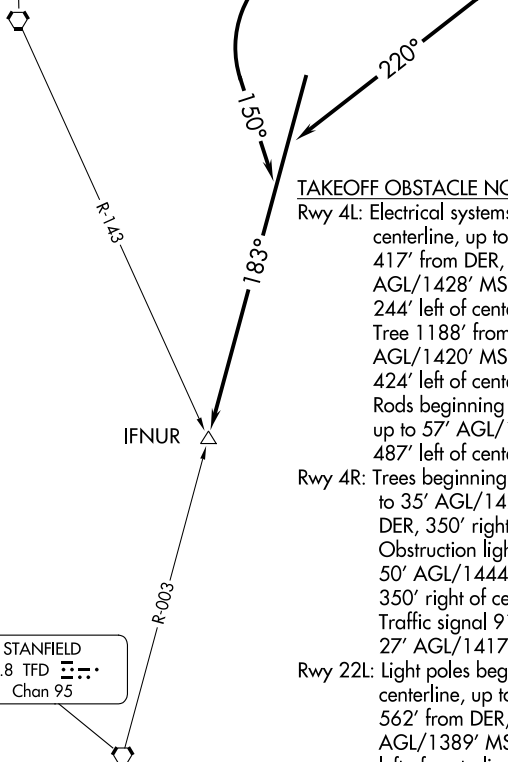


FALCON TOWER *
124.6 (CTAF)
PHOENIX DEP CON
120.7 239.0

PHOENIX
115.6 PXR
Chan 103

STANFIELD
114.8 TFD
Chan 95



TAKEOFF OBSTACLE NOTES

Rwy 4L: Electrical systems beginning 248' from DER, 416' left of centerline, up to 50' AGL/1430' MSL. Light poles 417' from DER, 29' left of centerline, up to 48' AGL/1428' MSL. Trees beginning 418' from DER, 244' left of centerline, up to 40' AGL/1423' MSL. Tree 1188' from DER, 155' right of centerline, 40' AGL/1420' MSL. Obstruction light 1314' from DER, 424' left of centerline, 54' AGL/1434' MSL. Rods beginning 1236' from DER, 424' left of centerline, up to 57' AGL/1437' MSL. Windsock 1523' from DER, 487' left of centerline, 34' AGL/1414' MSL.

Rwy 4R: Trees beginning 412' from DER, 15' left of centerline, up to 35' AGL/1425' MSL. Light poles beginning 513' from DER, 350' right of centerline, up to 51' AGL/1441' MSL. Obstruction light 531' from DER, 583' right of centerline, 50' AGL/1444' MSL. Trees beginning 585' from DER, 350' right of centerline, up to 40' AGL/1460' MSL. Traffic signal 914' from DER, 68' left of centerline, 27' AGL/1417' MSL.

Rwy 22L: Light poles beginning 256' from DER, 421' right of centerline, up to 24' AGL/1384' MSL. Windmill 562' from DER, 457' right of centerline, 39' AGL/1389' MSL. Light pole 1206' from DER, 510' left of centerline, 38' AGL/1398' MSL.

Rwy 22R: Light poles beginning 297' from DER, 65' right of centerline, up to 43' AGL/1403' MSL. Trees beginning 369' from DER, 127' right of centerline, up to 25' AGL/1385' MSL.

NOTE: Chart not to scale.

TAKEOFF MINIMUMS

Rwys 22L/R: Standard.

Rwy 4L: Standard with minimum climb of 480' per NM to 3600 or 1100-3 for climb in visual conditions.

Rwy 4R: Standard with minimum climb of 495' per NM to 3600 or 1100-3 for climb in visual conditions.

DEPARTURE ROUTE DESCRIPTION

TAKEOFF RUNWAYS 4L/4R: Climbing right turn to 5000 heading 220° and TFD VORTAC R-003 to IFNUR INT or for climb in visual condition, cross Falcon Field Airport at or above 2300 then climb to 5000 via TFD R-003 to IFNUR INT, expect filed altitude 10 minutes after departure.

TAKEOFF RUNWAYS 22L/22R: Climbing left turn to 5000 heading 150° and TFD VORTAC R-003 to IFNUR INT, expect filed altitude 10 minutes after departure.