

MESA, ARIZONA

AL-6647 (FAA)

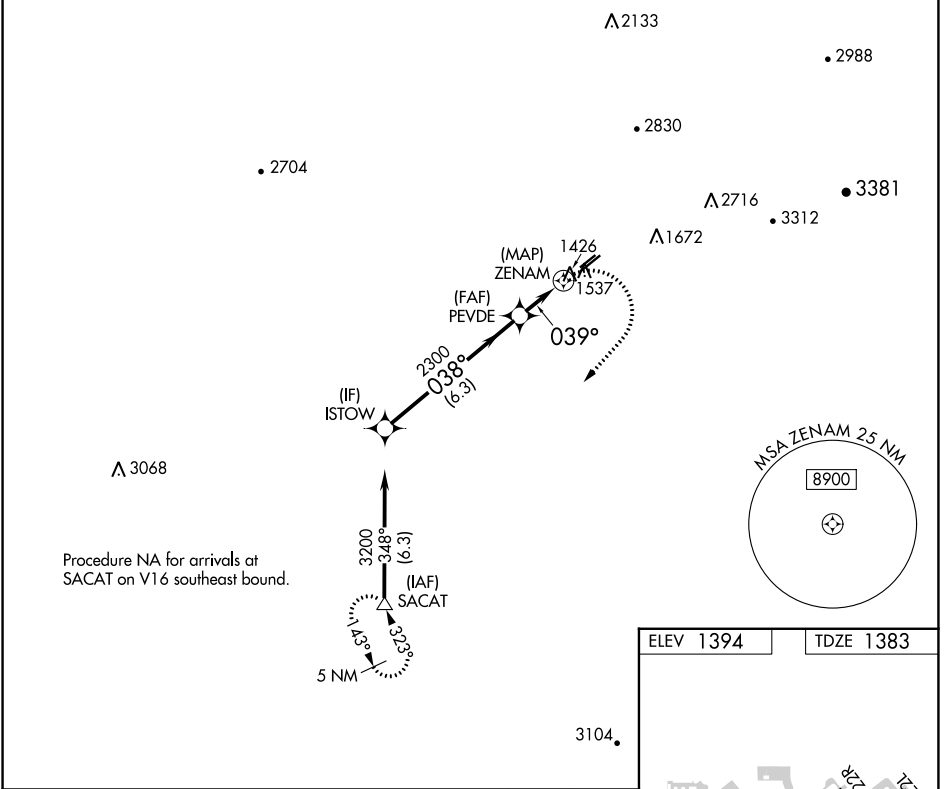
24137

WAAS CH <b>56625</b> <b>W04A</b>	APP CRS <b>039°</b>	Rwy Idg TDZE Apt Elev	<b>3799</b> <b>1383</b> <b>1394</b>
--	------------------------	-----------------------------	---

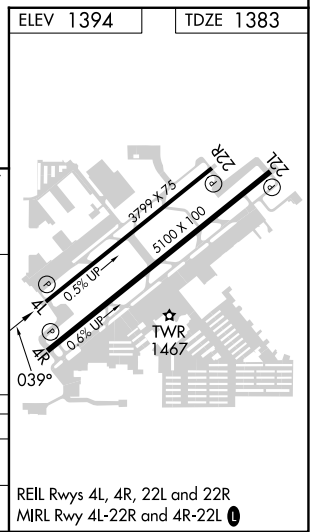
# RNAV (GPS) RWY 4L

FALCON FLD (F'F'Z)

RNP APCH.		MISSED APPROACH: Climbing right turn to 5000 direct SACAT and hold, continue climb-in-hold to 5000.		
▼ ▲ Rwy 4L helicopter visibility reduction below 1 SM NA.				
ATIS <b>118.25</b>	PHOENIX APP CON <b>120.7 239.0</b>	FALCON TOWER * <b>124.6 (CTAF) 0</b>	GND CON <b>121.3</b>	UNICOM <b>122.95</b>



Procedure NA for arrivals at SACAT on V16 southeast bound.



ISTOW		VGSi and descent angles not coincident (VGSi Angle 4.00/TCH 42).		5000	SACAT
3200		PEVDE		3.00°	ZENAM
038°		3.00°		TCH 39	039°
6.3 NM		2 NM		0.8 NM	
CATEGORY	A	B	C	D	
LP MDA	1780-1	397 (400-1)	1780-1½ 397 (400-1½)	NA	
LNAV MDA	1800-1	417 (500-1)	1800-1½ 417 (500-1½)	NA	

SW-4, 26 DEC 2024 to 23 JAN 2025

SW-4, 26 DEC 2024 to 23 JAN 2025

MESA, ARIZONA  
Amdt 1D 12AUG21

33°28'N-111°44'W

# RNAV (GPS) RWY 4L

FALCON FLD (F'F'Z)