


LOC I-LVN 108.9	APP CRS 294°	Rwy Idg 3707
		TDZE 958
		Apt Elev 961

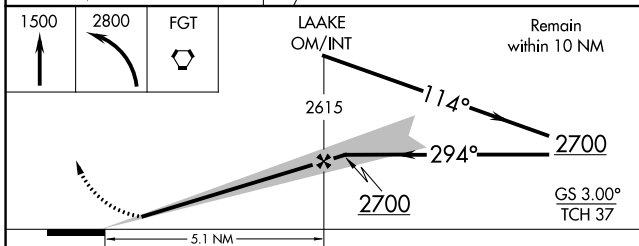
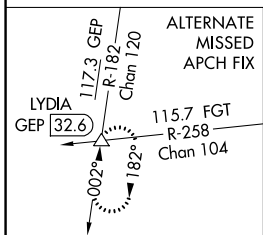
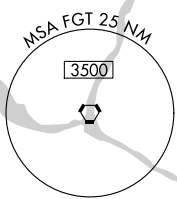
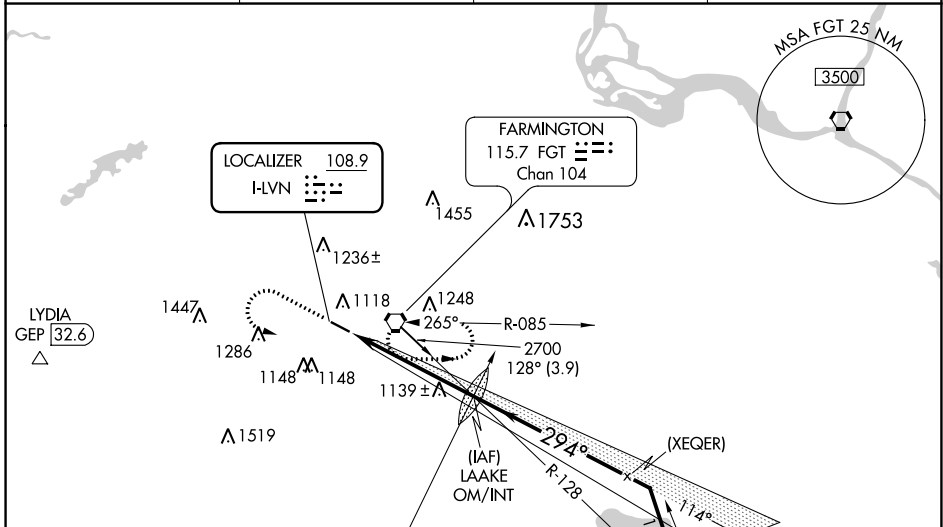
ILS or LOC RWY 30

AIRLAKE (LVN)

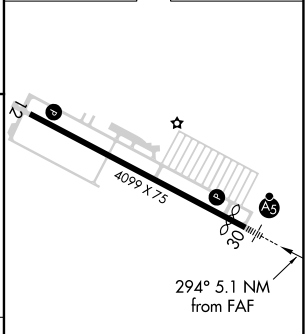
⚠ NA When Circling to Rwy 12 at night, operational VGSI required, remain on or above VGSI glidepath until threshold. Rwy 30 helicopter visibility reduction below ¼ SM NA. For inop ALS, increase S-LOC Cats A/B visibility to 1 SM.

MALSR  MISSED APPROACH: Climb to 1500 then climbing left turn to 2800 direct FGT VORTAC and hold.

AWOS-3 118.0	MINNEAPOLIS APP CON 134.7 284.7	CLNC DEL 118.95	UNICOM 123.0 (CTAF)
------------------------	---	---------------------------	-------------------------------



ELEV 961	D TDZE 958
----------	-------------------



CATEGORY	A	B	C	D
S-ILS 30	1208-¾ 250 (300-¾)			
S-LOC 30	1400-¾	442 (500-¾)	1400-⅞	442 (500-⅞)
C CIRCLING	1460-1	499 (500-1)	1660-2 699 (700-2)	1700-2¼ 739 (800-2¼)

REIL Rwy 12 ⓪	
HIRL Rwy 12-30 ⓪	
FAF to MAP 5.1 NM	
Knots	60 90 120 150 180
Min:Sec	5:06 3:24 2:33 2:02 1:42

NC-1, 26 DEC 2024 to 23 JAN 2025

NC-1, 26 DEC 2024 to 23 JAN 2025