

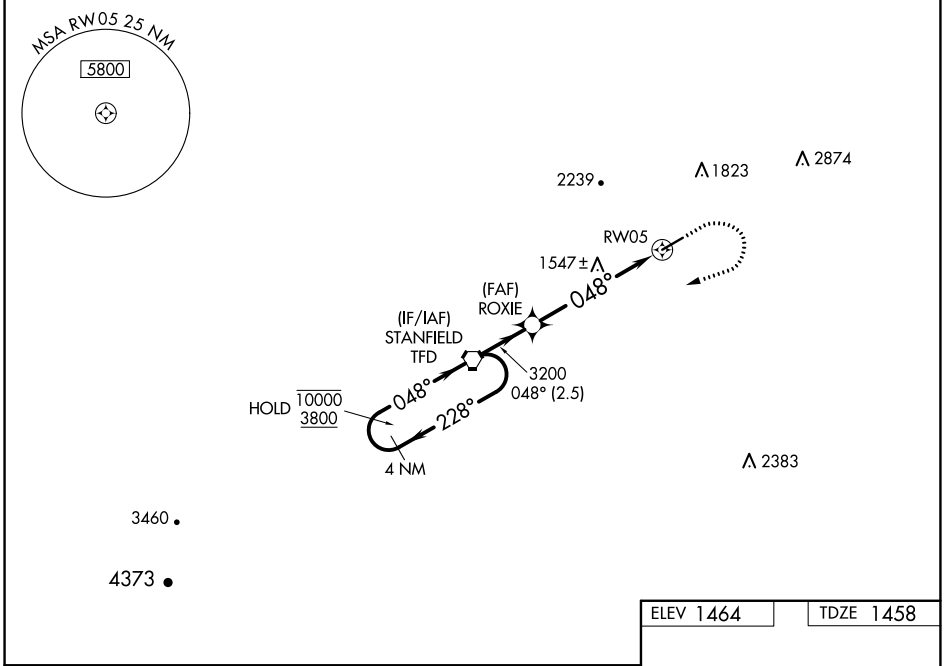
WAAS CH 61042 W05A	APP CRS 048°	Rwy Idg TDZE Apt Elev	5200 1458 1464
--	------------------------	-----------------------------	---

RNAV (GPS) RWY 5

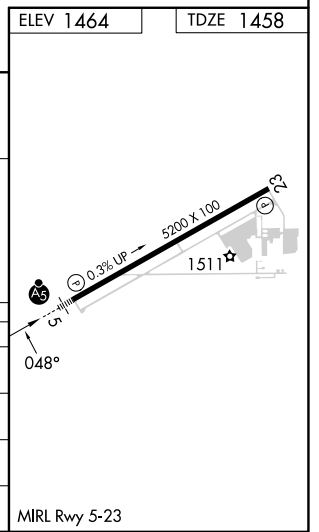
CASA GRANDE MUNI (CGZ)

RNP APCH.	MALSR	MISSED APPROACH: (Do not exceed 240K until TFD VORTAC) Climb to 2000 then climbing right turn to 5900 direct TFD VORTAC and hold. Continue climb in hold to 5900.
<p>▼ For uncompensated Baro-VNAV systems, LNAV/VNAV NA below -17°C or above 54°C. Circling NA for Cat C and D northwest of Rwy 5-23. For inoperative ALS, increase LNAV Cat C/D visibility to 1 SM.</p>		

AWOS-3PT 132.175	ALBUQUERQUE CENTER 125.4 269.3	UNICOM 122.7 (CTAF) 0
----------------------------	--	---------------------------------



4 NM Holding Pattern	TFD VORTAC	ROXIE	RWY 5
10000 3800	3200	3200	1547±
GP 3.00° TCH 40	2.5 NM	4.4 NM	1 NM
228°	048°	048°	048°
2000	5900	TFD	
*LNAV only			
*1 NM to RWY 5			



SW-4, 26 DEC 2024 to 23 JAN 2025

SW-4, 26 DEC 2024 to 23 JAN 2025