

WAAS CH 90240 W07A	APP CRS 071°	Rwy Idg 4657 TDZE 3131 Apt Elev 3158
--	------------------------	---

RNAV (GPS) RWY 7

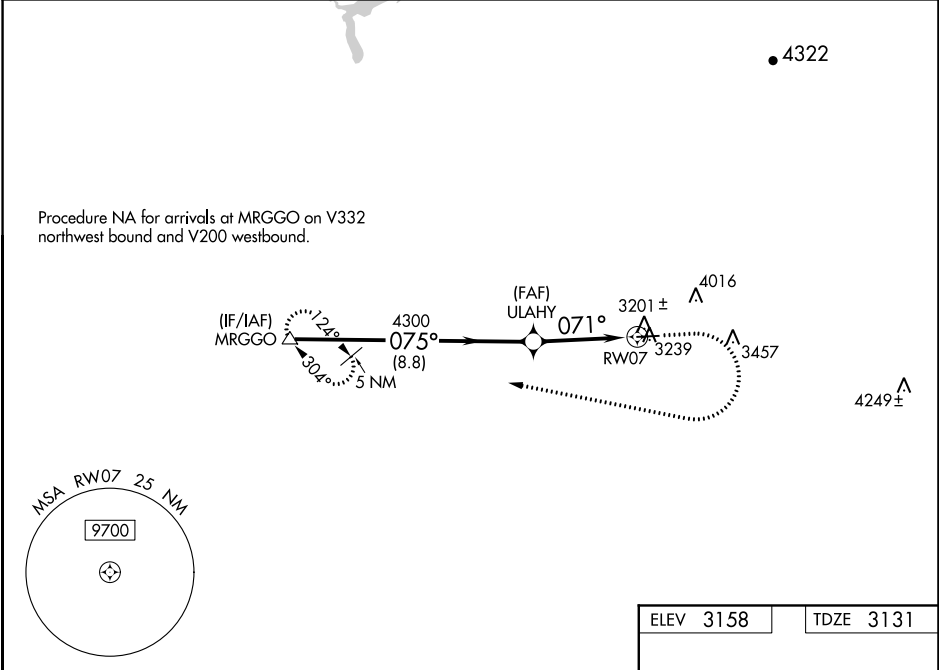
NEVADA COUNTY (GOO)

RNP APCH.

⚠ Circling NA north of Rwy 7-25. Circling Rwy 25 NA at night. Rwy 7 helicopter visibility reduction below 3/4 SM NA. For uncompensated Baro-VNAV systems, LNAV/VNAV NA below -21°C or above 54°C.

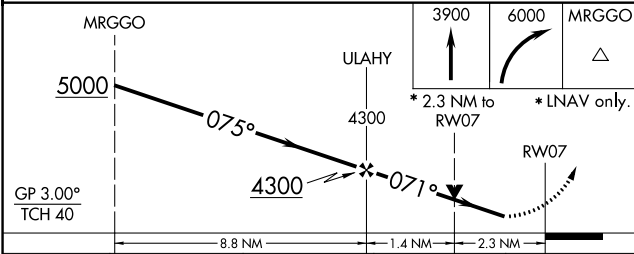
MISSED APPROACH: (Do not exceed 250K until MRGGO) Climb to 3900 then climbing right turn to 6000 direct MRGGO and hold.

AWOS-3 121.325	NORCAL APP CON 125.4 259.1	UNICOM 122.725 (CTAF)
--------------------------	--------------------------------------	---------------------------------

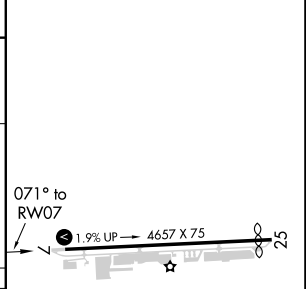


SW-2, 26 DEC 2024 to 23 JAN 2025

SW-2, 26 DEC 2024 to 23 JAN 2025



ELEV 3158	TDZE 3131
-----------	-----------



CATEGORY	A	B	C	D
LPV DA		3606-1 3/8	475 (500-1 3/8)	
LNAV/VNAV DA		3772-1 7/8	641 (700-1 7/8)	
LNAV MDA	3860-1	729 (800-1)	3860-2	729 (800-2)
C CIRCLING	3860-1	702 (800-1)	3880-2 722 (800-2)	3880-2 1/4 722 (800-2 1/4)

MIRL Rwy 7-25 **⓪**