

|  |                        |   |
|--|------------------------|---|
| WAAS<br>CH <b>53726</b><br><b>W24A</b> | APP CRS<br><b>239°</b> | Rwy Idg <b>3951</b><br>TDZE <b>1472</b><br>Apt Elev <b>1497</b> |
|--|------------------------|---|

# RNAV (GPS) RWY 24

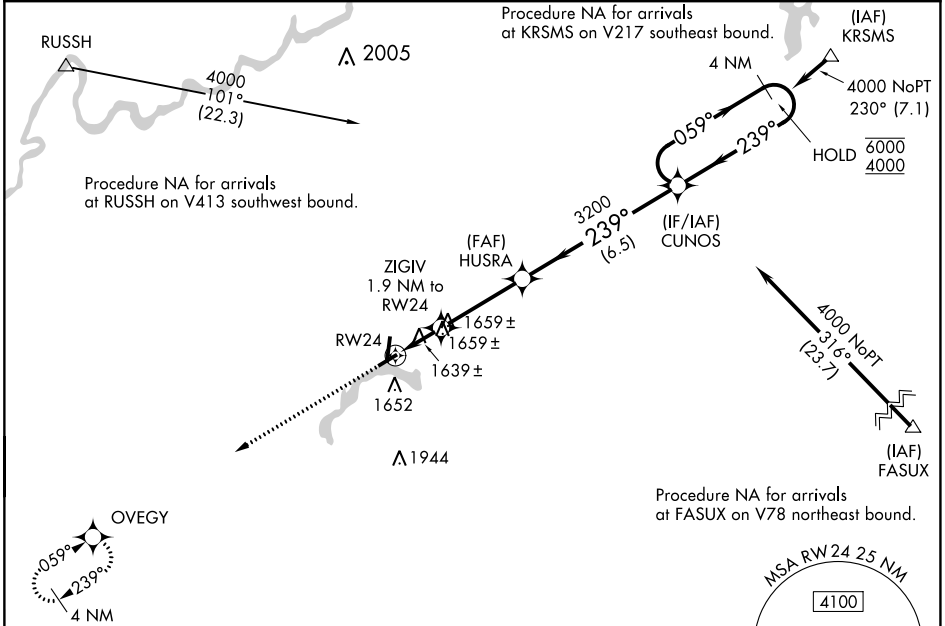
PRICE COUNTY (PBH)

RNP APCH - GPS.

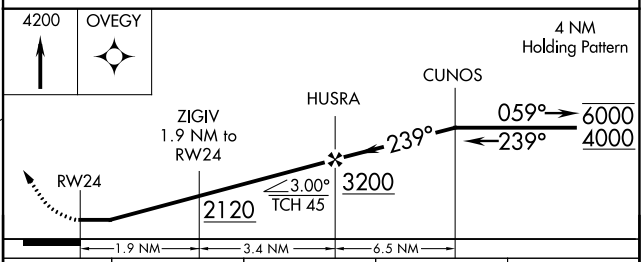
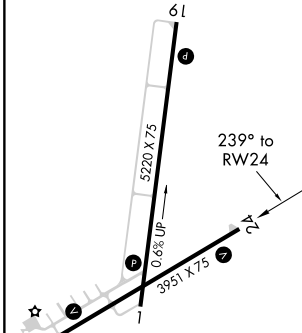
**⚠** Rwy 24 helicopter visibility reduction below 1 SM NA. When local altimeter setting not received, use Minocqua-Woodruff altimeter setting and increase all MDAs 100 feet and visibility Cats C and D ½ SM. Straight-in Rwy 24 NA at night, Circling Rwy 6, 24 NA at night.

**MISSED APPROACH:**  
Climb to 4200 direct OVEGY and hold.

|                          |   |                                 |
|--------------------------|---|---------------------------------|
| AWOS-3<br><b>125.875</b> | MINNEAPOLIS CENTER<br><b>133.65 281.5</b> | UNICOM<br><b>122.8 (CTAF) 0</b> |
|--------------------------|---|---------------------------------|



|           |           |
|-----------|-----------|
| ELEV 1497 | TDZE 1472 |
|-----------|-----------|



| CATEGORY | A      | B           | C                       | D                       |
|----------|--------|-------------|-------------------------|-------------------------|
| LP MDA   | 1900-1 | 428 (500-1) | 1900-1¼                 | 428 (500-1¼)            |
| LNAV MDA | 1920-1 | 448 (500-1) | 1920-1⅓                 | 448 (500-1⅓)            |
| CIRCLING | 2100-1 | 603 (700-1) | 2100-1¾<br>603 (700-1¾) | 2260-2½<br>763 (800-2½) |

REIL Rwy 1, 19 and 24 **0**  
MIRL Rwy 1-19 and 6-24 **0**

EC-3, 26 DEC 2024 to 23 JAN 2025

EC-3, 26 DEC 2024 to 23 JAN 2025