

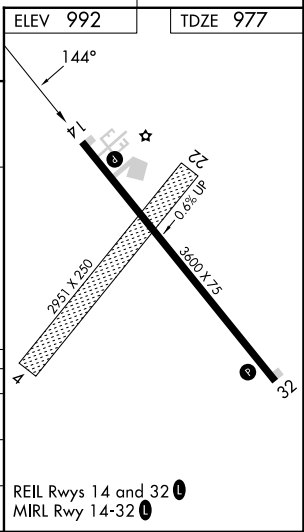
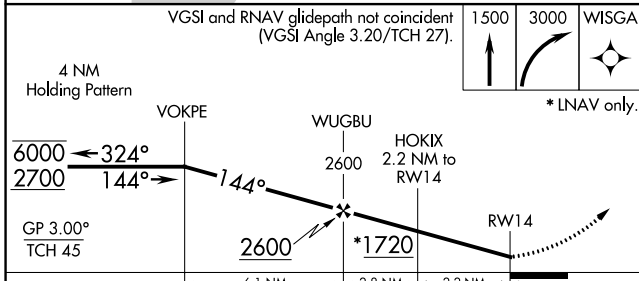
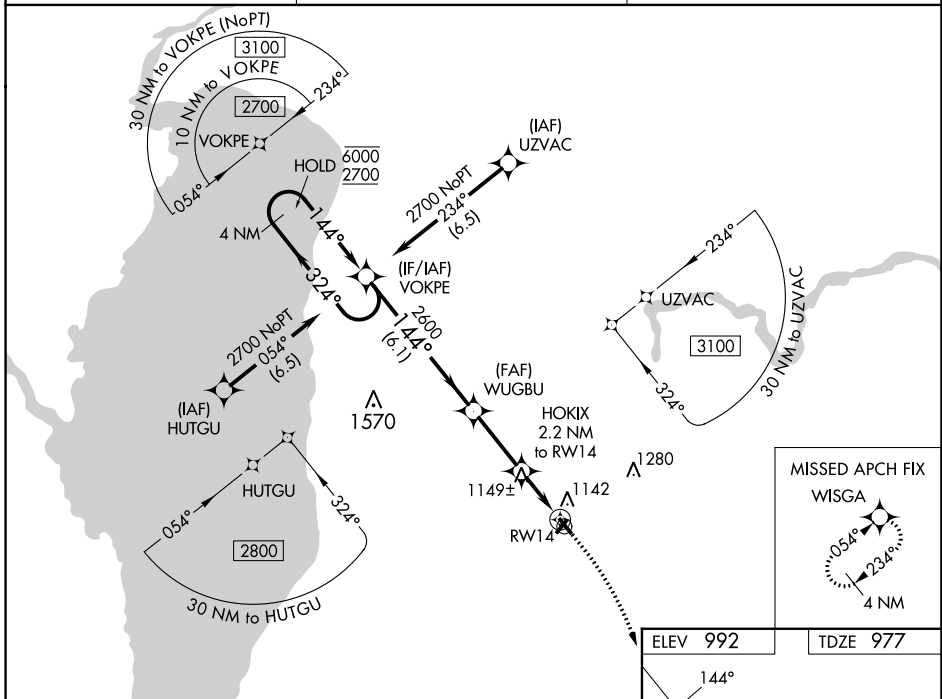
WAAS CH 99625 W14A	APP CRS 144°	Rwy Idg TDZE 977 Apt Elev 992	3600
--	------------------------	---	-------------

RNAV (GPS) RWY 14

NEW HOLSTEIN MUNI (8D1)

RNP APCH.	MISSED APPROACH: Climb to 1500 then climbing right turn to 3000 direct WISGA and hold.
Rwy 14 helicopter visibility reduction below 3/4 SM NA. Baro-VNAV NA. Use Oshkosh altimeter setting, when not received use Appleton altimeter setting.	

OSH ASOS 125.9	MILWAUKEE APP CON 127.0 263.075	UNICOM 123.0 (CTAF) 0
--------------------------	---	---------------------------------



CATEGORY	A	B	C	D
LPV DA	1358-1 1/8	381 (400-1 1/8)		NA
LNAV/VNAV DA	1390-1 1/4	413 (400-1 1/4)		NA
LNAV MDA	1480-1	503 (500-1)		NA

EC-3, 26 DEC 2024 to 23 JAN 2025

EC-3, 26 DEC 2024 to 23 JAN 2025