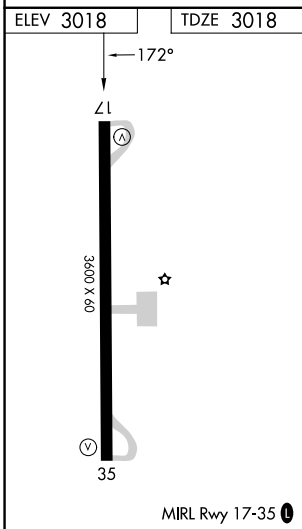
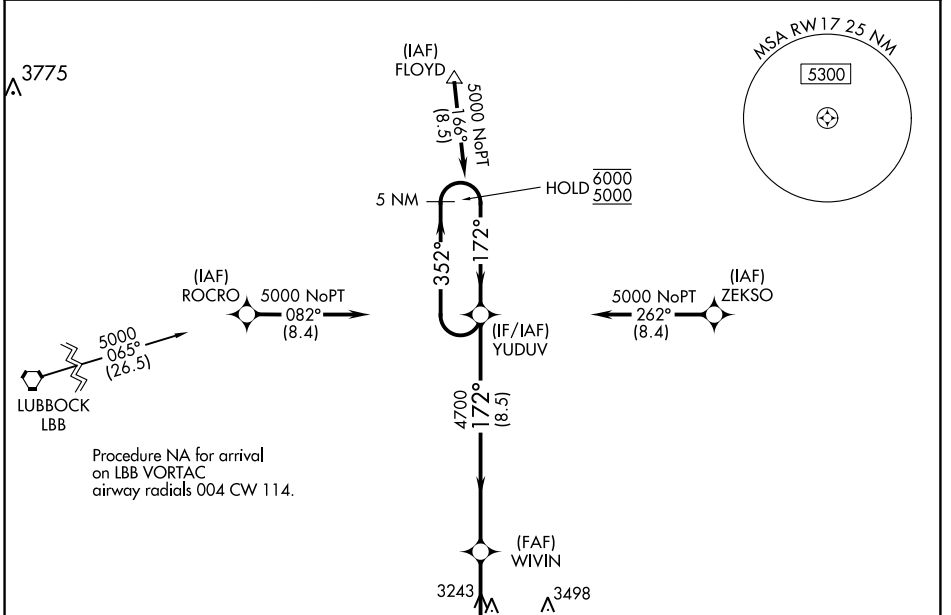


WAAS CH <b>82722</b> <b>W17A</b>	APP CRS <b>172°</b>	Rwy Idg TDZE Apt Elev	<b>3600</b> <b>3018</b> <b>3018</b>
--	------------------------	-----------------------------	---

# RNAV (GPS) RWY 17

CROSBYTON MUNI (8F3)

RNP APCH.		MISSED APPROACH: Climb to 5000 direct CEGUT and hold.
<p>Procedure NA at night.</p> <p>Rwy 17 helicopter visibility reduction below 1 SM NA.</p> <p>Use Lubbock altimeter setting.</p>		
LBB ASOS <b>125.3</b>	LUBBOCK APP CON <b>119.2 351.8</b>	UNICOM <b>122.8 (CTAF) 0</b>



ELEV 3018		TDZE 3018	
<p>3551 A</p> <p>5000</p> <p>CEGUT</p>		<p>MISSED APCH FIX</p> <p>CEGUT</p>	
<p>352°</p> <p>5 NM Holding Pattern</p>		<p>YUDUV</p> <p>5 NM</p> <p>352° → 6000</p> <p>← 172° 5000</p> <p>WIVIN</p> <p>4700</p> <p>4.00° TCH 40</p> <p>3.9 NM</p> <p>8.5 NM</p>	
<p>RW17</p>			
CATEGORY	A	B	C
LP MDA	3660-1	642 (700-1)	NA
LNAV MDA	3700-1	682 (700-1)	NA

SC-2, 26 DEC 2024 to 23 JAN 2025

SC-2, 26 DEC 2024 to 23 JAN 2025