

(PADRZ2.PADRZ) 17341

# PADRZ TWO DEPARTURE (RNAV)

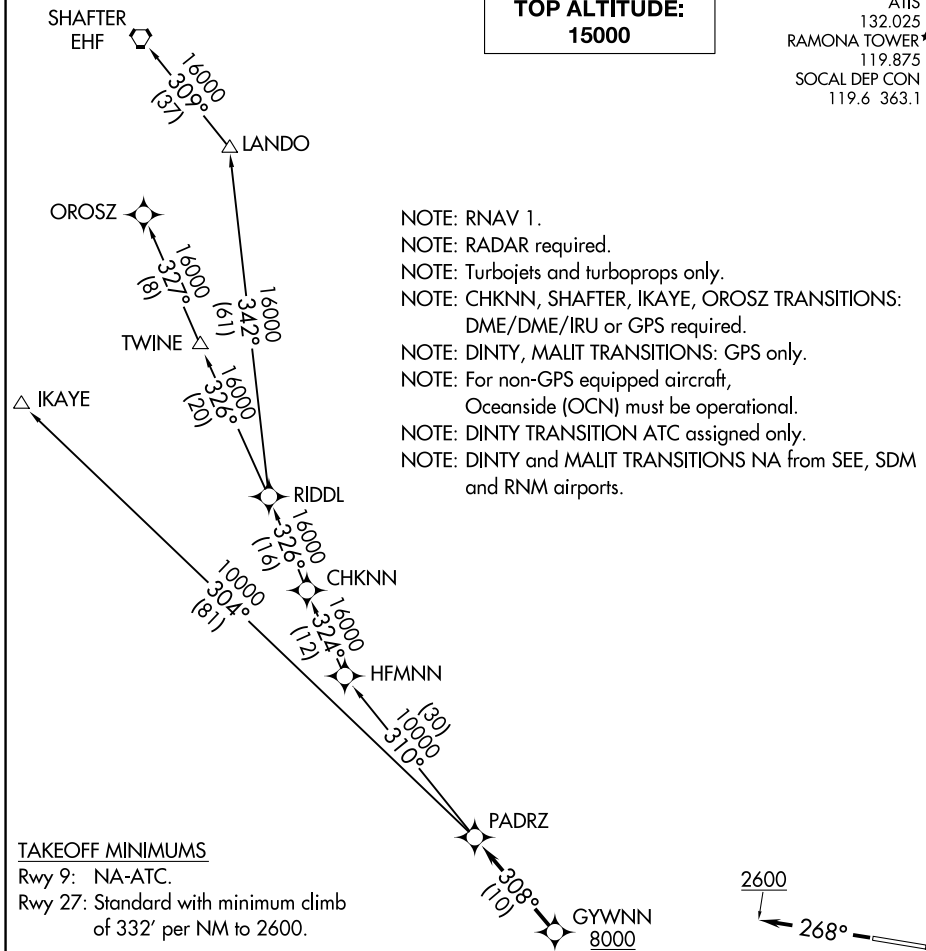
AL-6667 (FAA)

RAMONA (RNM)  
RAMONA, CALIFORNIA

**TOP ALTITUDE:**  
**15000**

ATIS  
132.025  
RAMONA TOWER\*  
119.875  
SOCAL DEP CON  
119.6 363.1

- NOTE: RNAV 1.
- NOTE: RADAR required.
- NOTE: Turbojets and turboprops only.
- NOTE: CHKNN, SHAFTER, IKAYE, OROSZ TRANSITIONS: DME/DME/IRU or GPS required.
- NOTE: DINTY, MALIT TRANSITIONS: GPS only.
- NOTE: For non-GPS equipped aircraft, Oceanside (OCN) must be operational.
- NOTE: DINTY TRANSITION ATC assigned only.
- NOTE: DINTY and MALIT TRANSITIONS NA from SEE, SDM and RNM airports.



### TAKEOFF MINIMUMS

Rwy 9: NA-ATC.

Rwy 27: Standard with minimum climb of 332' per NM to 2600.

NOTE: Chart not to scale.

### DEPARTURE ROUTE DESCRIPTION

TAKEOFF RUNWAY 27: Climb heading 268° to 2600, expect vectors to cross GYWNN at or above 8000, then on track 308° to PADRZ, thence. . . .

. . . .on (transition). Maintain 15000. Expect higher altitude 10 minutes after departure.

CHKNN TRANSITION (PADRZ2.CHKNN)

IKAYE TRANSITION (PADRZ2.IKAYE)

OROSZ TRANSITION (PADRZ2.ORSZ)

SHAFTER TRANSITION (PADRZ2.EHF)

# PADRZ TWO DEPARTURE (RNAV)

(PADRZ2.PADRZ) 07DEC17

RAMONA, CALIFORNIA  
RAMONA (RNM)

SW-3, 26 DEC 2024 to 23 JAN 2025

SW-3, 26 DEC 2024 to 23 JAN 2025