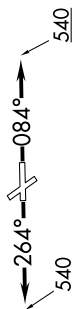
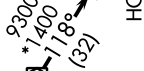


SC-5, 26 DEC 2024 to 23 JAN 2025

CTAF
 122.7
 HOUSTON DEP CON
 134.45 284.0



SCHOLES
 VUH

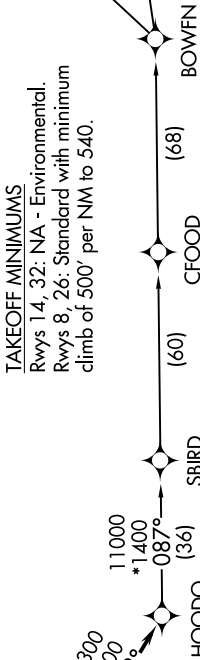
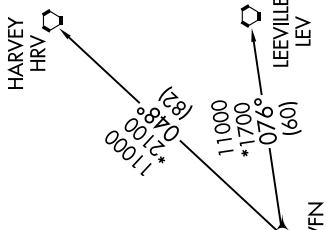


TAKEOFF MINIMUMS
 Rwy's 14, 32: NA - Environmental.
 Rwy's 8, 26: Standard with minimum
 climb of 500' per NM to 540.

- NOTE: RNAV 1.
- NOTE: RADAR required.
- NOTE: ATC assigned only.
- NOTE: DME/DME/IRU or GPS required.
- NOTE: For non-GPS equipped aircraft, LCH, LLA, TBD, and LEV DME's must be operational.

NOTE: Chart not to scale.

**TOP ALTITUDE:
 ASSIGNED BY ATC**



DEPARTURE ROUTE DESCRIPTION

- TAKEOFF RUNWAY 8: Climb on heading 084° to 540, for RADAR vectors to VUH VOR/DME, thence
- TAKEOFF RUNWAY 26: Climb on heading 264° to 540, for RADAR vectors to VUH VOR/DME, thence

. . . . on track 118° to HOODO, then on (transition). Maintain ATC assigned altitude.
 Expect filed altitude 10 minutes after departure.

- BOWFN TRANSITION (HOODO7.BOWFN)
- CFOOD TRANSITION (HOODO7.CFOOD)
- HARVEY TRANSITION (HOODO7.HRV)
- LEEVILLE TRANSITION (HOODO7.LEV)
- SBIRD TRANSITION (HOODO7.SBIRD)

SC-5, 26 DEC 2024 to 23 JAN 2025