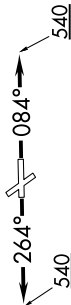


MMALT SEVEN DEPARTURE (RNAV)

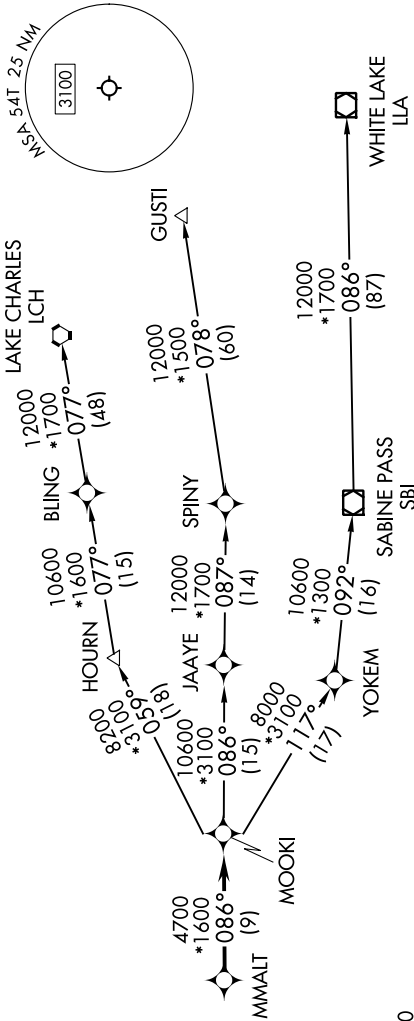
SC-5, 26 DEC 2024 to 23 JAN 2025

RNAV 1 - DME/DME/IRU or GPS.
RADAR required.

HOUSTON DEP CON
134.45 284.0
CTAF
122.7



**TOP ALTITUDE:
ASSIGNED BY ATC**



NOTE: GUSTI and LCH Transitions ATC assigned only for aircraft departing AXH, EFD, GLS, HPY, IWS, LBX, LVJ, SGR, TME, T00, T41 and 54T.

DEPARTURE ROUTE DESCRIPTION

TAKEOFF MINIMUMS
Rwys 14, 32: NA-Environmental.
Rwys 8, 26: Standard with minimum climb of 500'/NM to 540.

TAKEOFF RUNWAY 8: Climb on heading 084° to 540, for RADAR vectors to MMALT, thence. . . .
TAKEOFF RUNWAY 26: Climb on heading 264° to 540, for RADAR vectors to MMALT, thence. . . .

. . . on track 086° to MOOKI, then on (transition). Maintain ATC assigned altitude.
Expect filed altitude 10 minutes after departure.

- GUSTI TRANSITION (MMALT7.GUSTI)
- LAKE CHARLES TRANSITION (MMALT7.LCH)
- WHITE LAKE TRANSITION (MMALT7.LLA)

NOTE: Chart not to scale.

SC-5, 26 DEC 2024 to 23 JAN 2025

MMALT SEVEN DEPARTURE (RNAV)