

WAAS CH <b>99742</b>	APP CRS <b>122°</b>	Rwy Idg TDZE Apt Elev	<b>4248</b> <b>59</b> <b>66</b>
-------------------------	------------------------	-----------------------------	---------------------------------------

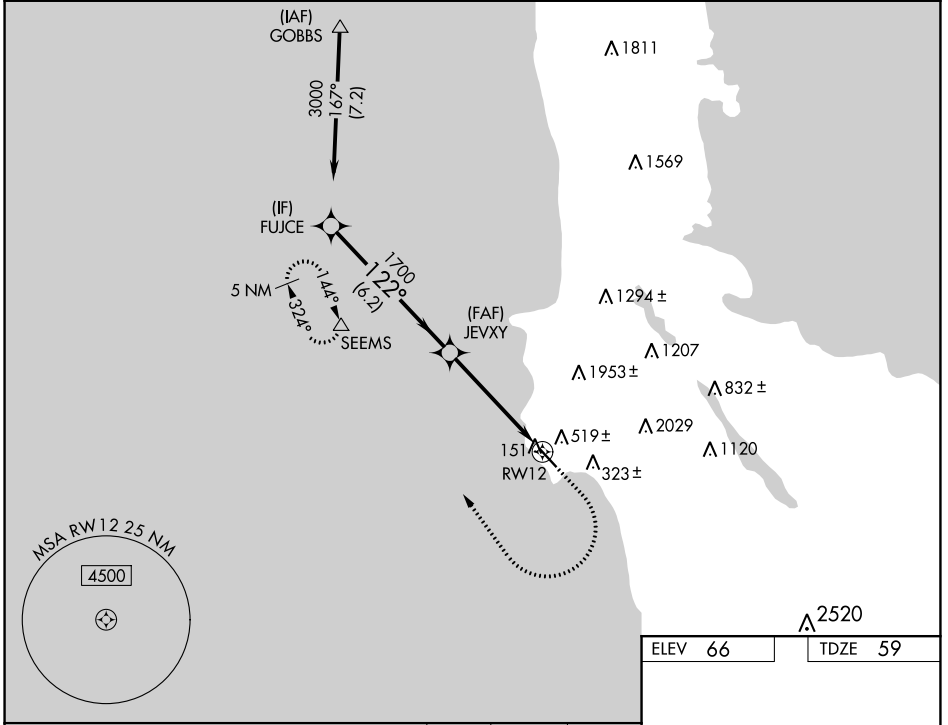
# RNAV (GPS) RWY 12

HALF MOON BAY (HAF')

RNP APCH.  
 ▼ Rwy 12 helicopter visibility reduction below 3/4 SM NA. For uncompensated Baro-VNAV systems, LNAV/VNAV NA below -15° C or above 54° C.

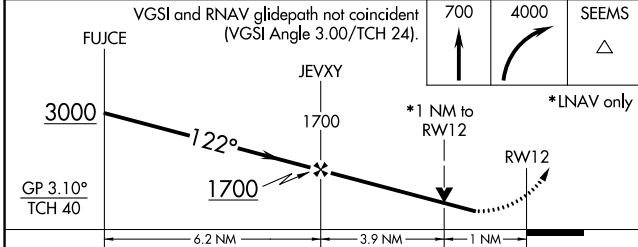
MISSED APPROACH: Climb to 700 then climbing right turn to 4000 direct SEEMS and hold, continue climb-in-hold to 4000.

AWOS <b>127.275</b>	NORCAL APP CON <b>135.1 307.2</b>	UNICOM <b>122.8 (CTAF)</b> <b>0</b>
------------------------	--------------------------------------	--

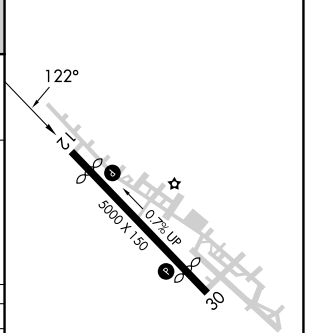


SW-2, 26 DEC 2024 to 23 JAN 2025

SW-2, 26 DEC 2024 to 23 JAN 2025



ELEV <b>66</b>	TDZE <b>59</b>
----------------	----------------



CATEGORY	A	B	C	D
LPV DA	360-7/8		301 (300-7/8)	
LNAV/VNAV DA	652-1 3/4		593 (600-1 3/4)	
LNAV MDA	660-1	601 (600-1)	660-1 3/4	601 (600-1 3/4)

REIL Rwy 30 **0**  
 MIRL Rwy 12-30 **0**