

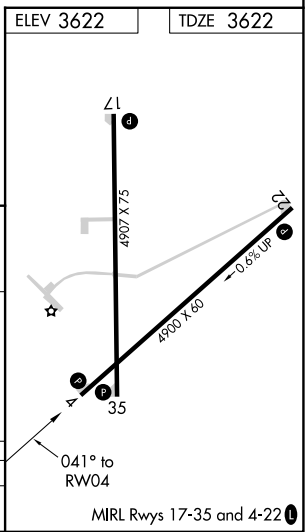
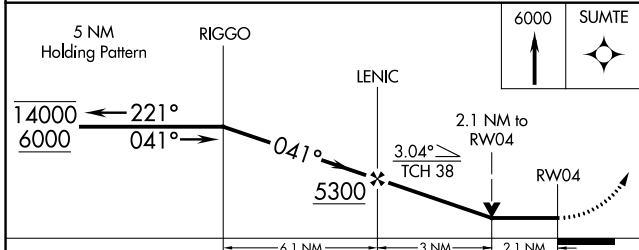
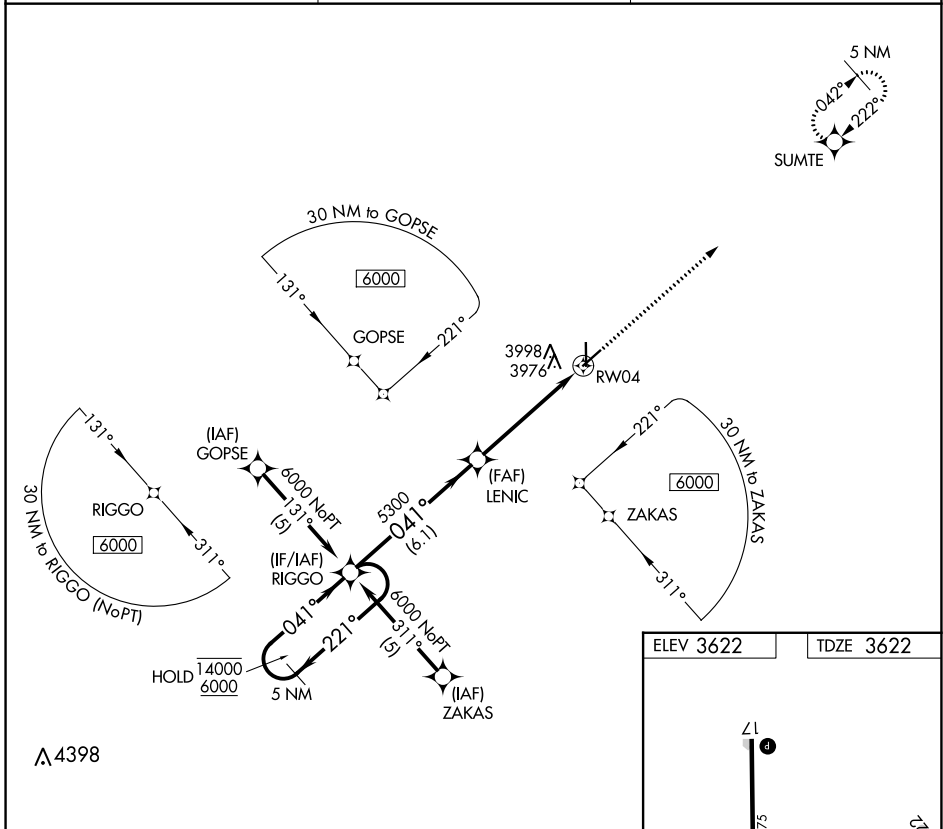
RNAV (GPS) RWY 4

ELKHART-MORTON COUNTY (EHA)

APP CRS	Rwy Idg	4900
041°	TDZE	3622
	Apt Elev	3622

RNP APCH-GPS.	MISSED APPROACH: Climb to 6000 direct SUMTE and hold.
Rwy 4 helicopter visibility reduction below 3/4 SM NA.	

AWOS-3P 118.025	KANSAS CITY CENTER 134.0 257.625	UNICOM 122.8 (CTAF) 0
---------------------------	--	---------------------------------



CATEGORY	A	B	C	D
LNAV MDA	4340-1	718 (800-1)	4340-2	718 (800-2)

NC-2, 26 DEC 2024 to 23 JAN 2025

NC-2, 26 DEC 2024 to 23 JAN 2025