

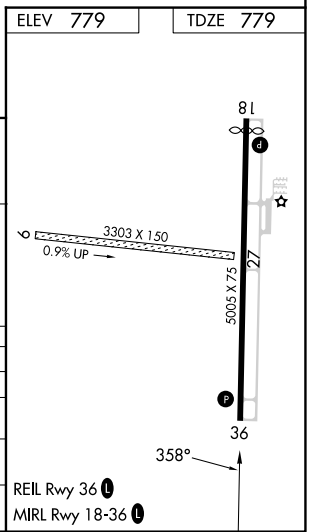
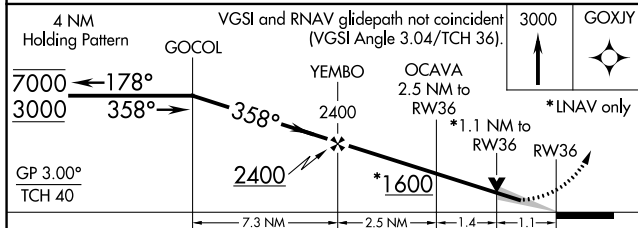
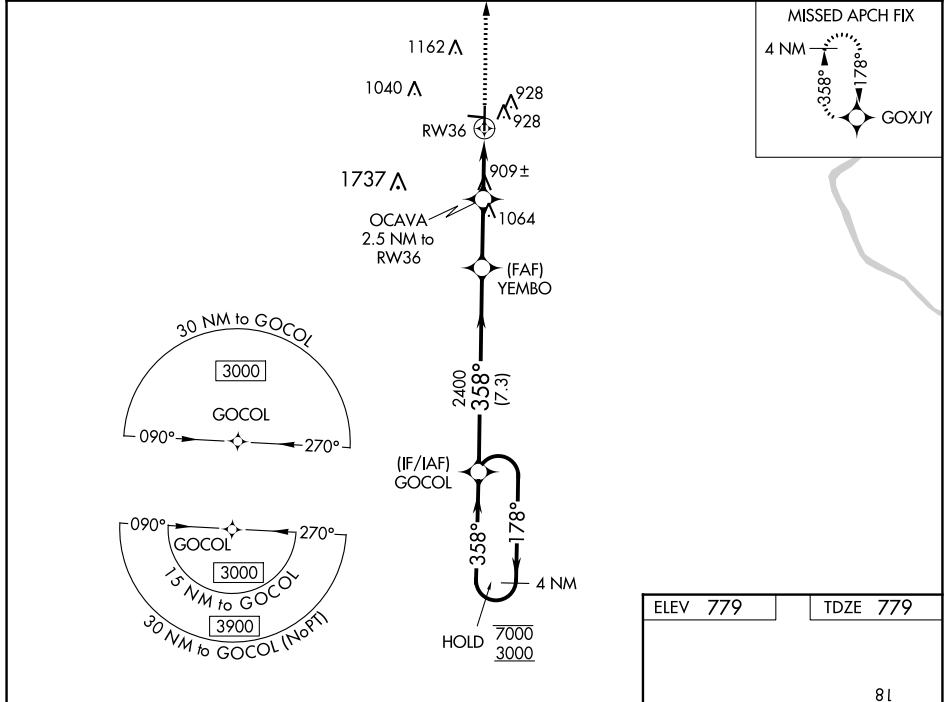
WAAS CH <b>93907</b> <b>W36A</b>	APP CRS <b>358°</b>	Rwy Idg TDZE Apt Elev	<b>5005</b> <b>779</b> <b>779</b>
--	------------------------	-----------------------------	---

# RNAV (GPS) RWY 36

MARSHALL MEML MUNI (MHL)

RNP APCH.	MISSED APPROACH: Climb to 3000 direct GOXJY and hold.
<p><b>▼</b> Circling NA to Rwys 9 and 27. For uncompensated Baro-VNAV systems, LNAV/VNAV NA below -16°C or above 54°C.</p>	

AWOS-3PT <b>118,675</b>	WHITEMAN APP CON ★ <b>127.45</b>	UNICOM <b>122.8 (CTAF) 0</b>
----------------------------	-------------------------------------	---------------------------------



CATEGORY	A	B	C	D
LPV DA	1029-1 250 (300-1)			NA
LNAV/VNAV DA	1091-1 312 (400-1)			NA
LNAV MDA	1160-1 381 (400-1)		1160-1½ 381 (400-1½)	NA
CIRCLING	1260-1 481 (500-1)		1480-2 701 (800-2)	NA

NC-3, 26 DEC 2024 to 23 JAN 2025

NC-3, 26 DEC 2024 to 23 JAN 2025