

WAAS CH 62917 W27A	APP CRS 272°	Rwy Idg TDZE Apt Elev	4000 839 842
--	------------------------	-----------------------------	---

RNAV (GPS) RWY 27

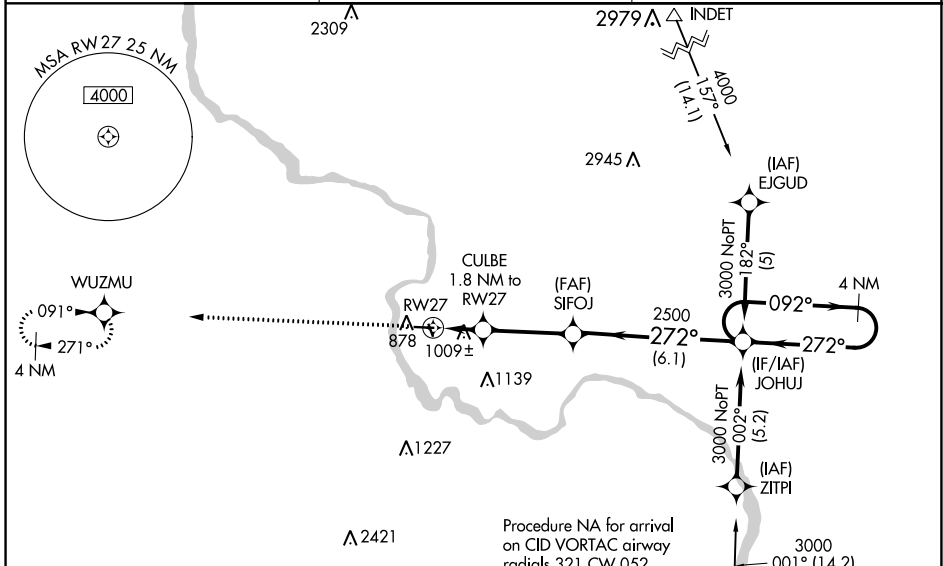
VINTON VETERANS MEML AIRPARK (VTI)

RNP APCH-GPS.

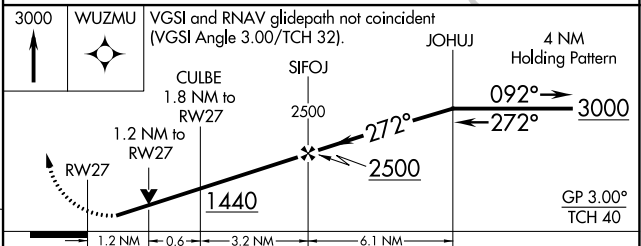
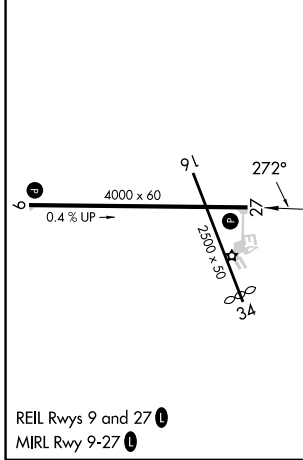
⚠ When Circling to Rwy 9 at night, operational VGSI required, remain on or above VGSI glidepath until threshold. For uncompensated Baro-VNAV systems, LNAV/VNAV NA below -16°C or above 54°C. Rwy 27 helicopter visibility reduction below 3/8 SM NA. When local altimeter setting not received, use Independence altimeter setting: increase LPV DA to 1140 feet, LNAV/VNAV DA to 1374 feet and all visibilities 1/8 SM; increase all MDAs 60 feet. Baro-VNAV and VDP NA when using Independence altimeter setting.

MISSED APPROACH: Climb to 3000 direct WUZMU and hold.

AWOS-3 120.075	CEDAR RAPIDS APP CON * 134.05 266.8	UNICOM 122.8 (CTAF)
--------------------------	---	-------------------------------



ELEV 842	TDZE 839
----------	----------



CATEGORY	A	B	C	D
LPV DA	1089-1	250 (300-1)		NA
LNAV/VNAV DA	1323-1 3/4	484 (500-1 3/4)		NA
LNAV MDA	1260-1	421 (500-1)		NA
CIRCLING	1320-1 478 (500-1)	1360-1 518 (600-1)		NA

NC-3, 26 DEC 2024 to 23 JAN 2025

NC-3, 26 DEC 2024 to 23 JAN 2025