

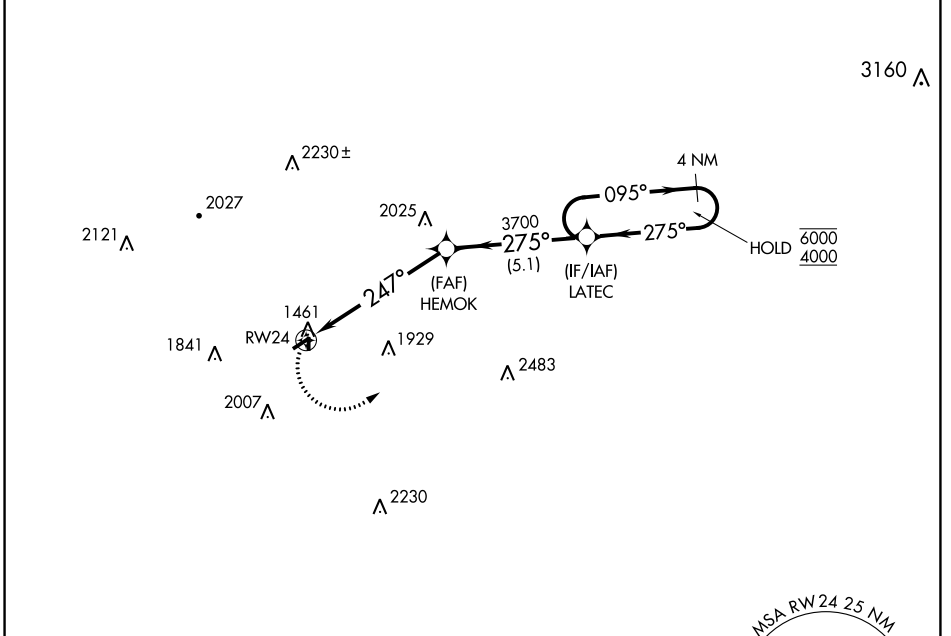
| | |
|------------------------|-------------------------|
| APP CRS 247° | Rwy Idg 3003 |
| | TDZE 1439 |
| | Apt Elev 1445 |

RNAV (GPS) RWY 24

PUNXSUTAWNEY MUNI (N35)

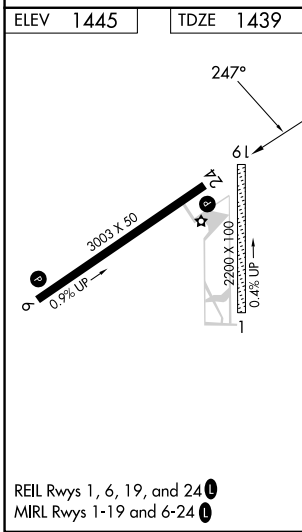
| | |
|--|--|
| RNP APCH - GPS. | MISSED APPROACH: Climbing left turn to 4000 direct LATEC and hold. |
| <p>▼ Circling NA to Rwy 1 and 19. Rwy 24 helicopter visibility reduction below 3/4 SM NA. Use Dubois Rgnl altimeter setting.</p> <p>▲ NA</p> | |

| | | |
|----------------------------|---|---------------------------------|
| DUJ ASOS 119.025 | CLEVELAND CENTER 126.725 291.65 | UNICOM 123.0 (CTAF) 0 |
|----------------------------|---|---------------------------------|



NE-4, 26 DEC 2024 to 23 JAN 2025

NE-4, 26 DEC 2024 to 23 JAN 2025



| | | | | |
|----------|-----------------------|--|----------------------|---|
| 4000 | LATEC | VGSI and descent angles not coincident (VGSI Angle 4.00/TCH 40). | 4 NM Holding Pattern | |
| | | | | |
| CATEGORY | A | B | C | D |
| LNAV MDA | 2160-1 | 721 (800-1) | NA | |
| CIRCLING | 2180-1 735 (800-1) | 2260-1¼ 815 (900-1¼) | NA | |