

LOC/DME I-HRJ <b>108.35</b> Chan 20 (Y)	APP CRS <b>048°</b>	Rwy Idg TDZE Apt Elev	<b>5005</b> <b>196</b> <b>202</b>
---	------------------------	-----------------------------	---

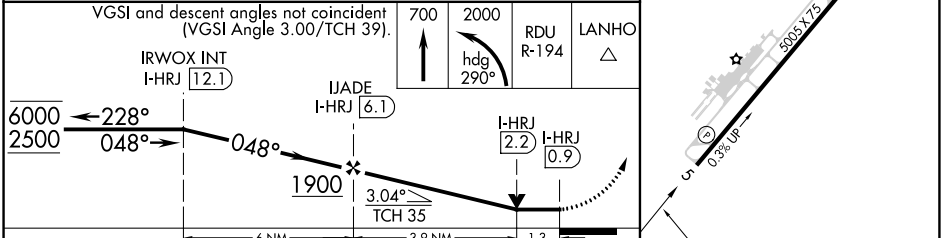
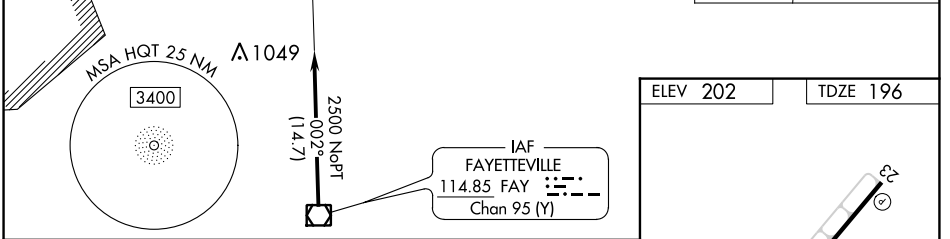
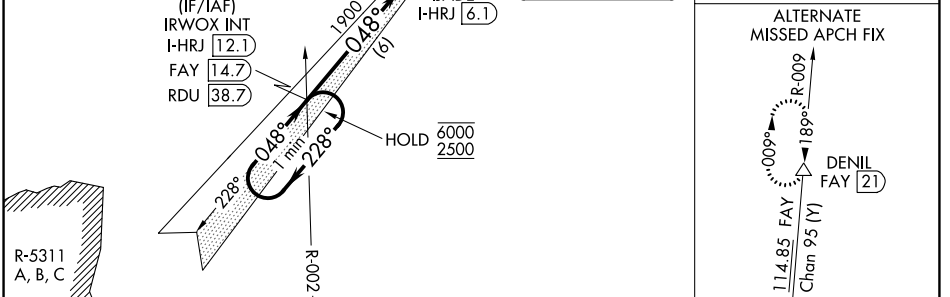
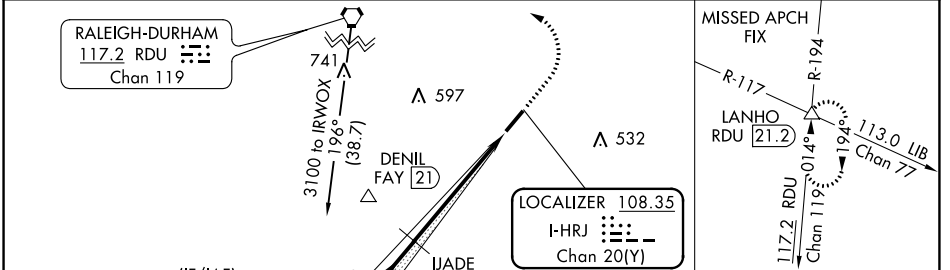
# LOC RWY 5

HARNETT RGNL JETPORT (HRJ)

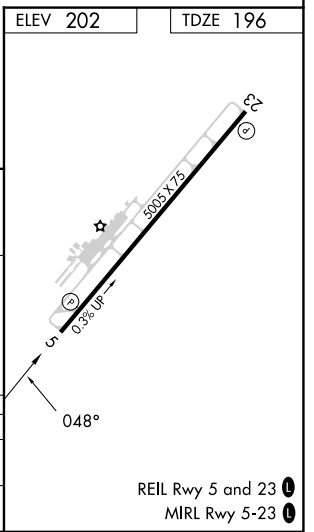
DME required.

MISSED APPROACH: Climb to 700 then climbing left turn to 2000 on heading 290° and RDU R-194 to LANHO INT/RDU 21.2 DME and hold.

AWOS-3 <b>119.025</b>	FAYETTEVILLE APP CON <b>125.175 285.575</b>	UNICOM <b>122.7 (CTAF)</b>
--------------------------	--	-------------------------------



VGSI and descent angles not coincident (VGSI Angle 3.00/TCH 39).	700	2000	RDU R-194	LANHO
IRWOX INT I-HRJ 12.1	IJADE I-HRJ 6.1	I-HRJ 2.2	I-HRJ 0.9	
6000 ← 228°	2500 → 048°	1900	3.04° TCH 35	
6 NM		3.9 NM	1.3	
CATEGORY	A	B	C	D
S-5	640-1	444 (500-1)	640-1 $\frac{3}{8}$ 444 (500-1 $\frac{3}{8}$ )	NA
<b>C</b> CIRCLING	660-1 458 (500-1)	720-1 518 (600-1)	780-1 $\frac{1}{2}$ 578 (600-1 $\frac{1}{2}$ )	NA



SE-2, 26 DEC 2024 to 23 JAN 2025

SE-2, 26 DEC 2024 to 23 JAN 2025