

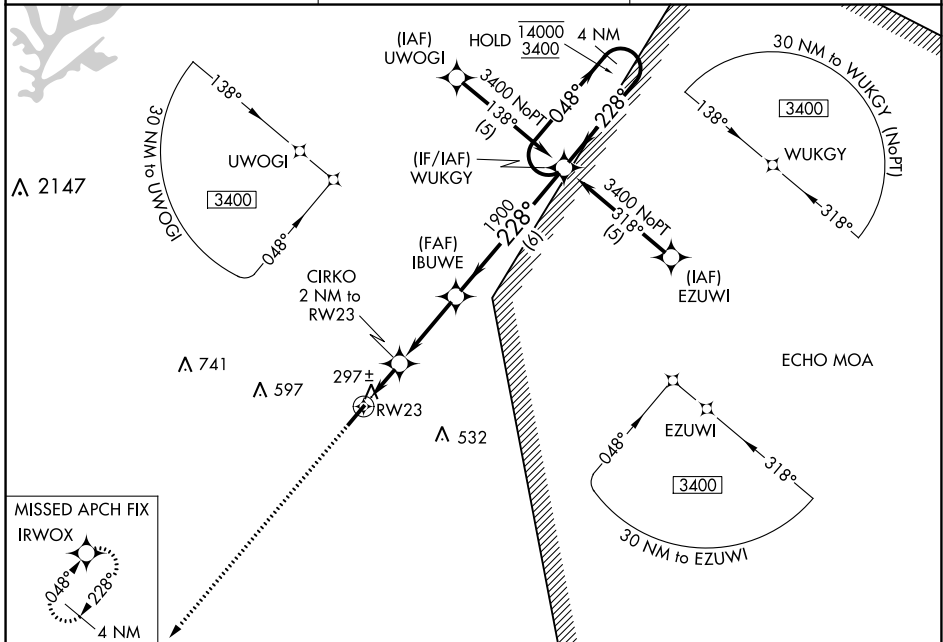
WAAS CH 45904 W23A	APP CRS 228°	Rwy Idg TDZE Apt Elev	5005 202 202
--	------------------------	-----------------------------	---

RNAV (GPS) RWY 23

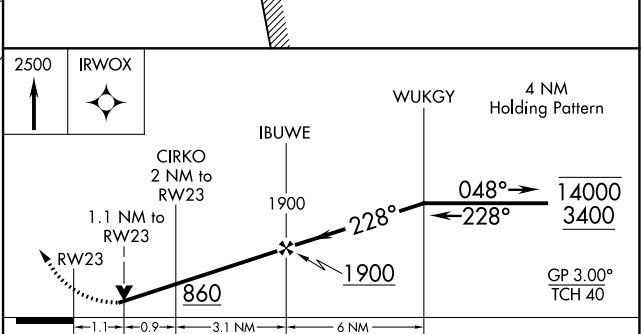
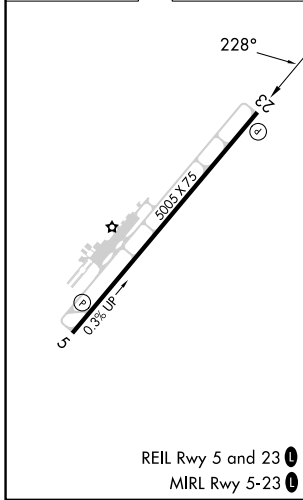
HARNETT RGNL JETPORT (HRJ)

RNP APCH - GPS.	MISSED APPROACH: Climb to 2500 direct IRWOX and hold.
<p>▼ ▲ Rwy 23 helicopter visibility reduction below ¾ SM NA.</p>	

AWOS-3 119.025	FAYETTEVILLE APP CON 125.175 285.575	UNICOM 122.7 (CTAF) 0
--------------------------	--	---------------------------------



ELEV 202	TDZE 202
----------	----------



CATEGORY	A	B	C	D
LPV DA	551-1 349 (400-1)			NA
LNAV MDA	600-1	398 (400-1)	600-1½ 398 (400-1½)	NA
<input checked="" type="checkbox"/> CIRCLING	660-1 458 (500-1)	720-1 518 (600-1)	780-1½ 578 (600-1½)	NA

SE-2, 26 DEC 2024 to 23 JAN 2025

SE-2, 26 DEC 2024 to 23 JAN 2025