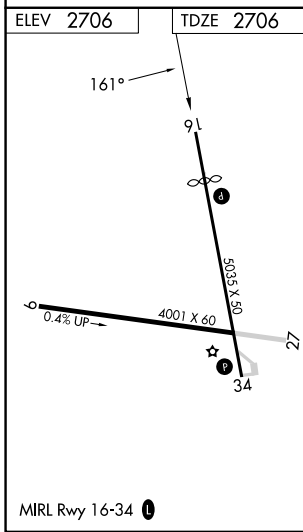
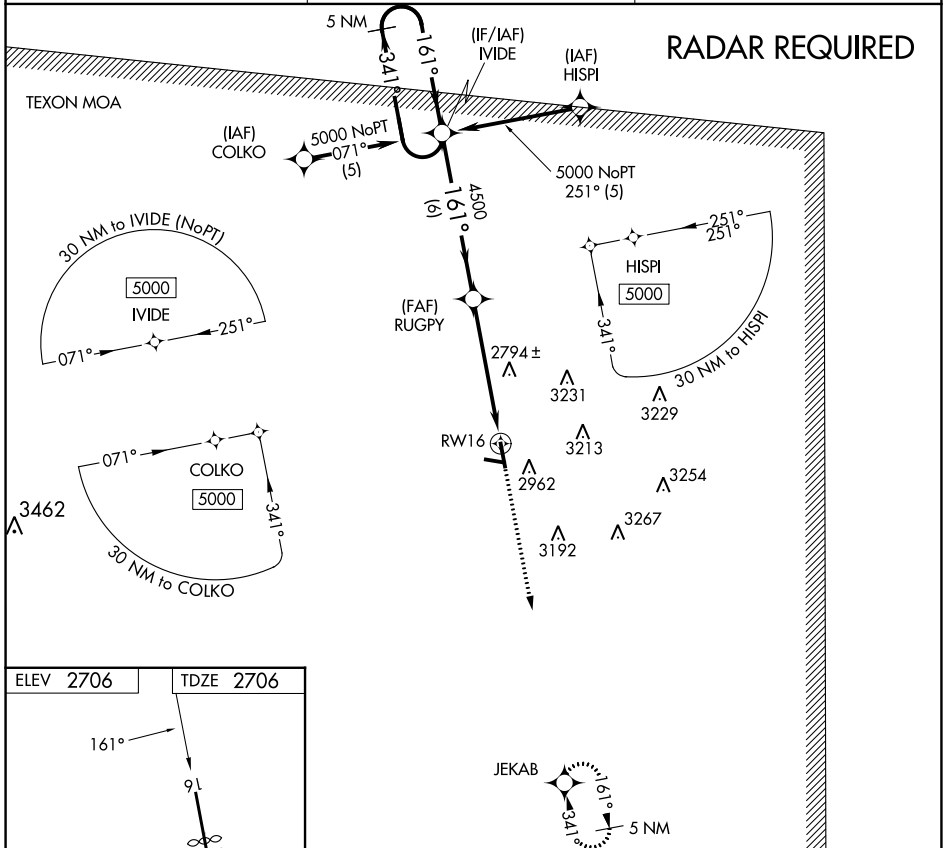


APP CRS	Rwy Idg	4030
161°	TDZE	2706
	Apt Elev	2706

RNAV (GPS) RWY 16

REAGAN COUNTY (E41)

RNP APCH		MISSED APPROACH: Climb to 5000 direct JEKAB and hold.	
<p>When local altimeter not received, use San Angelo altimeter setting. Circling NA east of Rwy 16-34.</p>			
AWOS-3PT	FORT WORTH CENTER	CTAF	
118.4	126.15 322.55	122.9	



5 NM Holding Pattern	VGSI and descent angles not coincident (VGSI Angle 3.00/TCH 30).	5000	JEKAB
5000	← 341°	161° →	161°
		4500	
		3.05° TCH 40	2.3 NM to RWY 16
			6 NM
			3.1 NM
			2.3 NM

CATEGORY	A	B	C	D
LNAV MDA	3460-1 754 (800-1)	3460-1¼ 754 (800-1¼)	3460-2¼ 754 (800-2¼)	NA
CIRCLING	3460-1 754 (800-1)	3460-1¼ 754 (800-1¼)	3460-2¼ 754 (800-2¼)	NA

SC-3, 26 DEC 2024 to 23 JAN 2025

SC-3, 26 DEC 2024 to 23 JAN 2025