

| | | | |
|--|------------------------|---|---|
| WAAS CH 78419 W20A | APP CRS 202° | Rwy Idg TDZE 1068 Apt Elev 1068 | 4400 1068 1068 |
|--|------------------------|---|---|

RNAV (GPS) RWY 20

GRIMES FLD (I74)

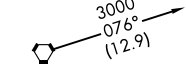
RNP APCH.

⚠ Baro-VNAV NA when using Springfield altimeter setting. For uncompensated Baro-VNAV systems, LNAV/VNAV NA below -17°C (2°F) or above 54°C (130°F). Rwy 20 helicopter visibility reduction below ¼ SM NA. When local altimeter setting not received, use Springfield altimeter setting and increase all DAs 44 feet, all MDAs 60 feet, increase LPV all Cats and LNAV Cat C visibility ¼ SM, and increase Circling Cat C visibility ¼ SM. VDP NA with Springfield altimeter setting. Circling NA to Rwy 1 and 19.

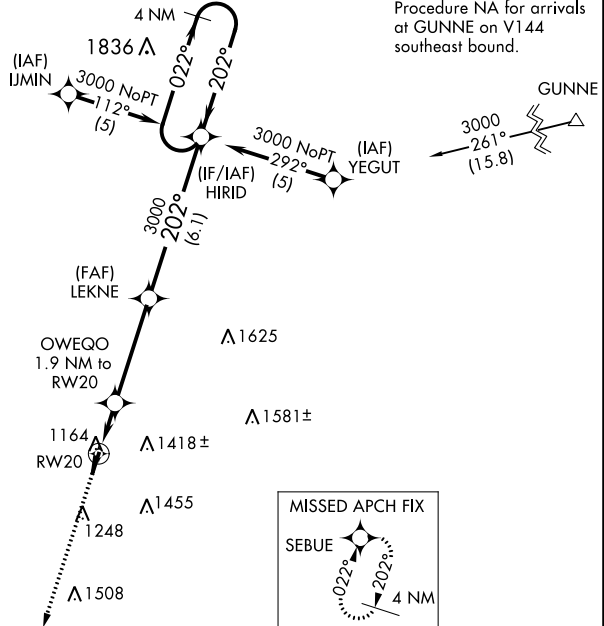
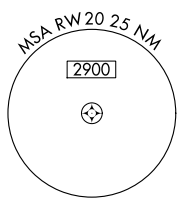
MISSED APPROACH:
Climb to 4000 direct SEBUE and hold.

| | | |
|--------------------------|---|---------------------------------|
| AWOS-3 118.325 | COLUMBUS APP CON 134.45 294.5 | UNICOM 122.7 (CTAF) 0 |
|--------------------------|---|---------------------------------|

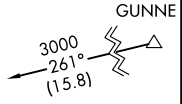
Procedure NA for arrivals on ROD VORTAC airway radials 023 CW 055.



ROSEWOOD
ROD



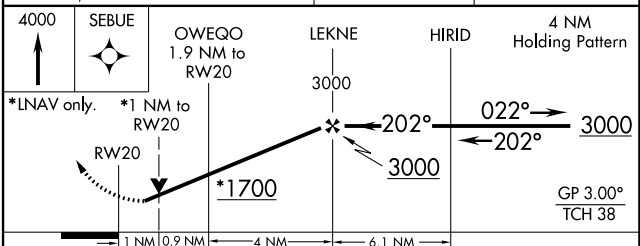
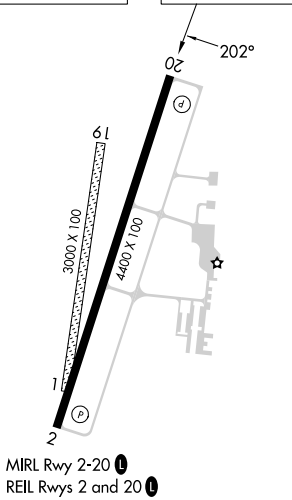
Procedure NA for arrivals at GUNNE on V144 southeast bound.



EC-2, 26 DEC 2024 to 23 JAN 2025

EC-2, 26 DEC 2024 to 23 JAN 2025

| | |
|-----------|-----------|
| ELEV 1068 | TDZE 1068 |
|-----------|-----------|



| CATEGORY | A | B | C | D |
|-------------------|-----------------------|-----------------------|-----------------------|----|
| LPV DA | 1347-1 | 279 (300-1) | | NA |
| LNAV/VNAV DA | 1469-1½ | 401 (500-1½) | | NA |
| LNAV MDA | 1420-1 | 352 (400-1) | | NA |
| C CIRCLING | 1580-1 512 (600-1) | 1780-1 712 (800-1) | 1800-2 732 (800-2) | NA |