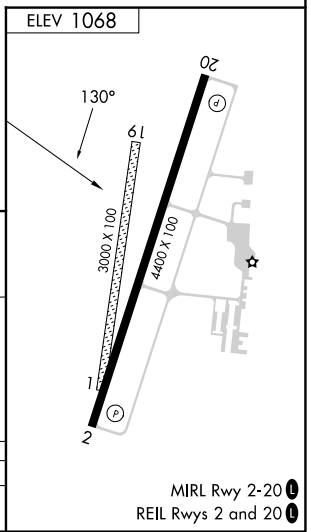
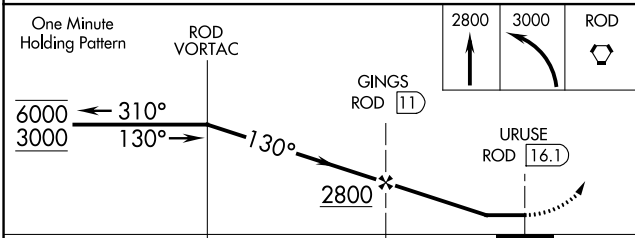
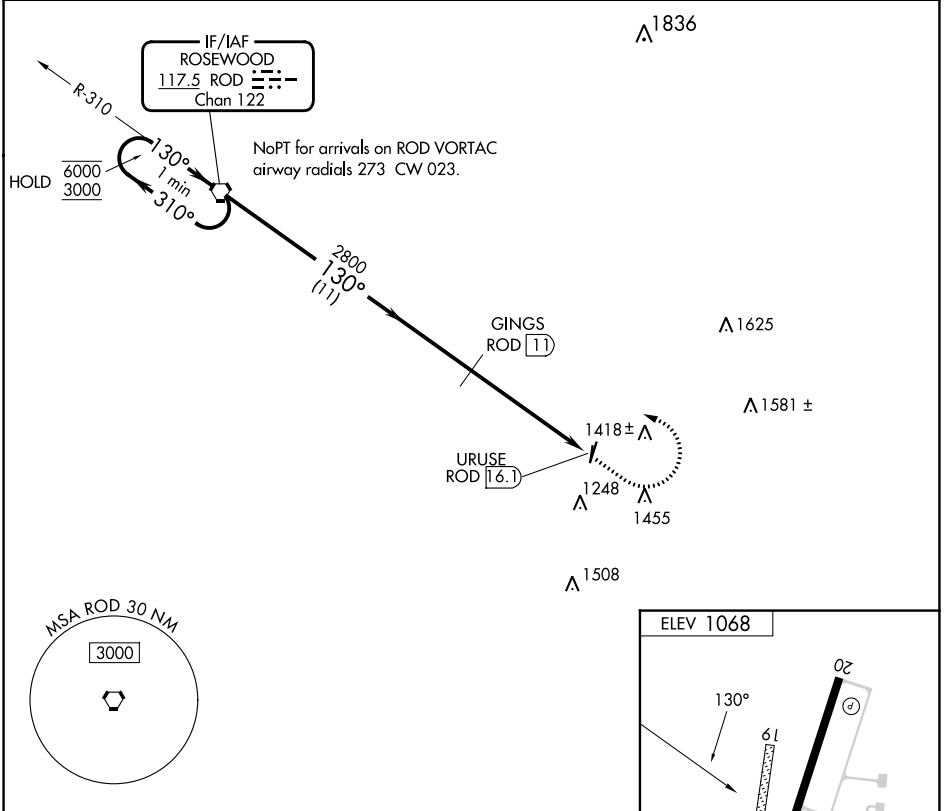


VORTAC ROD 117.5 Chan 122	APP CRS 130°	Rwy Idg TDZE Apt Elev N/A N/A 1068
---	------------------------	--

VOR-A

GRIMES FLD (I74)

DME required.		MISSED APPROACH: Climb to 2800 then climbing left turn to 3000 direct ROD VORTAC and hold.
<p>▽ Circling NA to Rwy 1 and 19. When local altimeter setting not received, use Springfield altimeter setting and increase all MDAs 60 feet and Cat C visibility $\frac{1}{4}$ SM.</p> <p>△</p>		
AWOS-3 118.325	COLUMBUS APP CON 134.45 294.5	UNICOM 122.7 (CTAF) ①



CATEGORY	A	B	C	D
① CIRCLING	1580-1 512 (600-1)	1780-1 712 (800-1)	1800-2 732 (800-2)	NA

EC-2, 26 DEC 2024 to 23 JAN 2025

EC-2, 26 DEC 2024 to 23 JAN 2025

MIRL Rwy 2-20 **①**
REIL Rwys 2 and 20 **①**