

(ESTRR5.ESTRR) 24081

AL-6707 (FAA)

STANLY COUNTY (VUJ)  
ALBEMARLE, NORTH CAROLINA

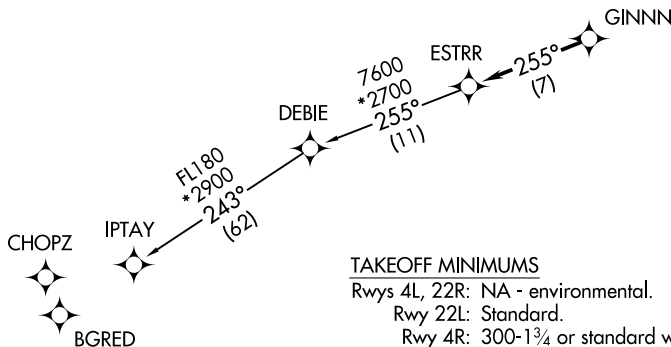
# ESTRR FIVE DEPARTURE (RNAV)

CHARLOTTE DEP CON  
128.325 307.8  
AWOS-3  
128.175  
CLNC DEL  
121.75 254.375  
GND CON  
121.75 254.375  
STANLY COUNTY TOWER ★  
126.275 (CTAF) 291.9

RNAV 1 - DME/DME/IRU or GPS.

RADAR required.

**TOP ALTITUDE:  
3000**



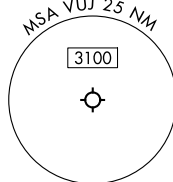
### TAKEOFF MINIMUMS

Rwys 4L, 22R: NA - environmental.

Rwy 22L: Standard.

Rwy 4R: 300-1¾ or standard with minimum  
climb of 315' per NM to 1000.

- NOTE: For turbo jets only.
- NOTE: If unable to accept climb rates, advise ATC on initial contact.
- NOTE: Transponder code will be issued via PDC or Charlotte CLNC DEL.
- NOTE: Upon reaching 10000 MSL, accelerate to and maintain 280K, if unable advise ATC.



NOTE: Chart not to scale.



### DEPARTURE ROUTE DESCRIPTION

Climb on heading assigned by ATC, on RADAR vectors to GINNN, then on track 255° to ESTRR, then on IPTAY Transition. Maintain 3000, expect filed altitude within 10 minutes after departure.

IPTAY TRANSITION (ESTRR5.IPTAY)

ESTRR FIVE DEPARTURE (RNAV)

(ESTRR5.ESTRR) 21MAR24

ALBEMARLE, NORTH CAROLINA  
STANLY COUNTY (VUJ)

SE-2, 26 DEC 2024 to 23 JAN 2025

SE-2, 26 DEC 2024 to 23 JAN 2025