

KILNS FIVE DEPARTURE (RNAV)

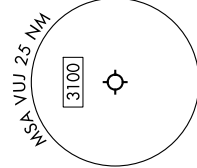
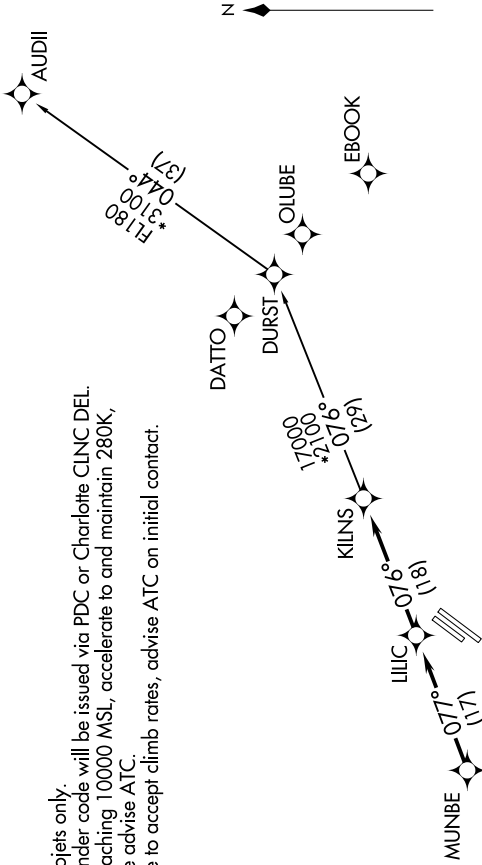
SE-2, 26 DEC 2024 to 23 JAN 2025

CHARLOTTE DEP CON
128.325 307.8
AWOS-3
128.175
CLNC DEL
121.75 254.375
GND CON
121.75 254.375
STANLY COUNTY TOWER*
126.275 (CTAF) 291.9

RNAV 1 - DME/DME/IRU or GPS.
RADAR required.

NOTE: For turbojets only.
NOTE: Transponder code will be issued via PDC or Charlotte CLNC DEL.
NOTE: Upon reaching 10000 MSL, accelerate to and maintain 280K, if unable advise ATC.
NOTE: If unable to accept climb rates, advise ATC on initial contact.

TOP ALTITUDE:
3000



TAKEOFF MINIMUMS
Rwys 4L, 22R: NA - environmental.
Rwy 22L: Standard.
Rwy 4R: 300-1/4 or Standard with minimum climb of 315' per NM to 1000.

DEPARTURE ROUTE DESCRIPTION

Climb on heading assigned by ATC, on RADAR vectors to **MUNBE**, then on depicted route to **KILNS**, then on **AUDII** Transition. Maintain 3000. Expect clearance to filed altitude within 10 minutes after departure.

AUDII TRANSITION (KILNS5.AUDII)

NOTE: Chart not to scale.

KILNS FIVE DEPARTURE (RNAV)

SE-2, 26 DEC 2024 to 23 JAN 2025