

# KNIGHTS THREE DEPARTURE

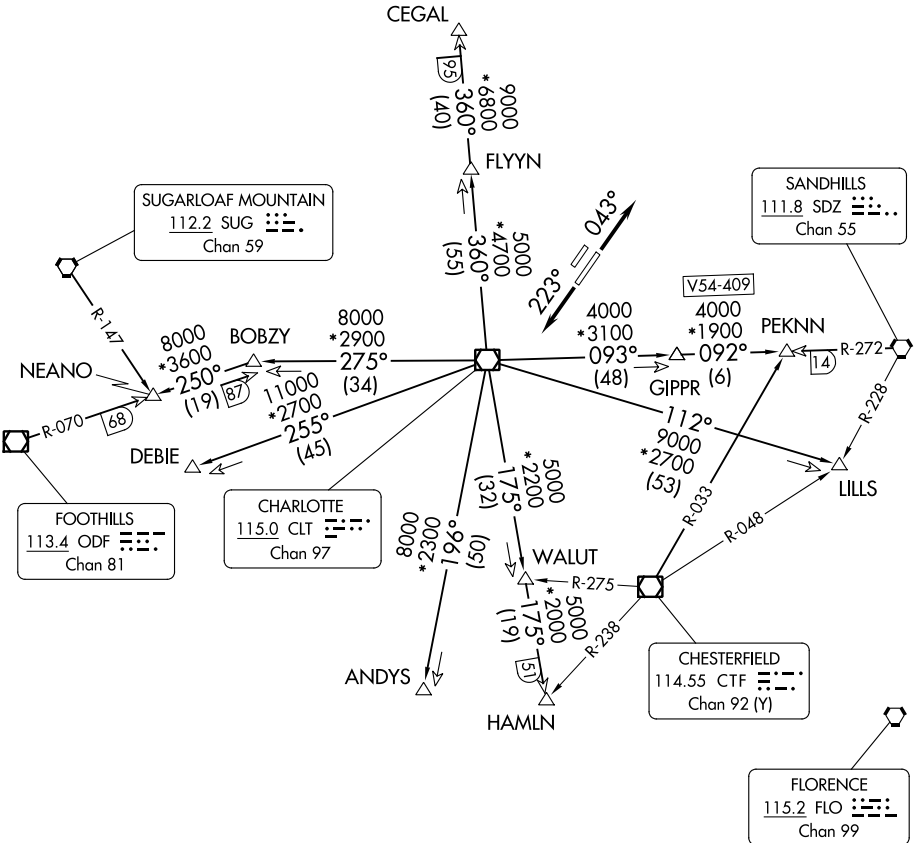
CHARLOTTE DEP CON  
128.325 307.8  
AWOS-3  
128.175  
CLNC DEL  
121.75 254.375  
GND CON  
121.75 254.375  
STANLEY COUNTY TOWER\*  
126.275 (CTAF) 291.9

**TOP ALTITUDE:  
3000**

RADAR and DME required.

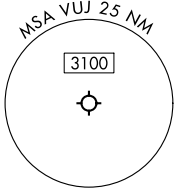
### TAKEOFF MINIMUMS

Rwys 4L, 22R: NA-Environmental.  
Rwy 22L: Standard.  
Rwy 4R: 300-1¼ or standard with minimum  
climb of 315' per NM to 1000.



SE-2, 26 DEC 2024 to 23 JAN 2025

SE-2, 26 DEC 2024 to 23 JAN 2025



- NOTE: For propeller aircraft only.
- NOTE: Turboprops: Operate in a manner that will result in best forward speed and climb rate.
- NOTE: Transponder code will be issued via Charlotte clearance delivery.

(CONTINUED ON FOLLOWING PAGE)

NOTE: Chart not to scale.

# KNIGHTS THREE DEPARTURE

# KNIGHTS THREE DEPARTURE



## DEPARTURE ROUTE DESCRIPTION

TAKEOFF RUNWAY 4R: Climb on heading 043°, thence. . . .

TAKEOFF RUNWAY 22L: Climb on heading 223°, thence. . . .

. . . .expect RADAR vectors to intercept filed/assigned transition or enroute fix/navaid.  
Maintain 3000, expect filed altitude/flight level 10 minutes after departure.

ANDYS TRANSITION (KNI3.ANDYS): From over CLT VOR/DME on CLT R-196 to ANDYS.

CEGAL TRANSITION (KNI3.CEGAL): From over CLT VOR/DME on CLT R-360 to CEGAL.

DEBIE TRANSITION (KNI3.DEBIE): From over CLT VOR/DME on CLT R-255 to DEBIE.

FLYYN TRANSITION (KNI3.FLYYN): From over CLT VOR/DME on CLT R-360 to FLYYN.

HAMLN TRANSITION (KNI3.HAMLN): From over CLT VOR/DME on CLT R-175 to HAMLN.

LILLS TRANSITION (KNI3.LILLS): From over CLT VOR/DME on CLT R-112 to LILLS.

NEANO TRANSITION (KNI3.NEANO): From over CLT VOR/DME on CLT R-275 to BOBZY,  
then on ODF R-070 to NEANO.

PEKNN TRANSITION (KNI3.PEKNN): From over CLT VOR/DME on CLT R-093 to GIPPR,  
then on SDZ R-272 to PEKNN.

SE-2, 26 DEC 2024 to 23 JAN 2025

SE-2, 26 DEC 2024 to 23 JAN 2025