

(KWEEN5.KWEEN) 24081

AL-6707 (FAA)

KWEEN FIVE DEPARTURE (RNAV)

STANLY COUNTY (VUJ)
ALBEMARLE, NORTH CAROLINA

CHARLOTTE DEP CON
128.325 307.8
AWOS-3
128.175
CLNC DEL
121.75 254.375
GND CON
121.75 254.375
STANLY COUNTY TOWER*
126.275 (CTAF) 291.9

RNAV 1 - DME/DME/IRU or GPS.

RADAR required.

**TOP ALTITUDE:
3000**

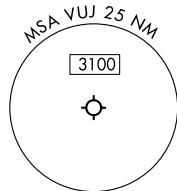
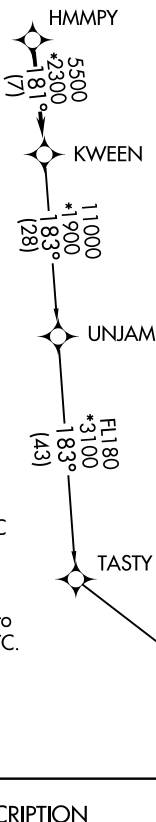


TAKEOFF MINIMUMS

Rwys 4L, 22R: NA - Environmental.

Rwy 22L: Standard.

Rwy 4R: 300-1 $\frac{3}{4}$ or standard with minimum climb of 315' per NM to 1000.



- NOTE: For turbo jets only.
- NOTE: Transponder code will be issued via PDC or Charlotte CLNC DEL.
- NOTE: If unable to accept climb rates, advise ATC on initial contact.
- NOTE: Upon reaching 10000 MSL, accelerate to and maintain 280K, if unable advise ATC.

NOTE: Chart not to scale.



DEPARTURE ROUTE DESCRIPTION

Climb on heading assigned by ATC, on RADAR vectors to HMMPY, then on track 181° to KWEEN, then on assigned transition, maintain 3000, expect filed altitude within 10 minutes after departure.

PITRW TRANSITION (KWEEN5.PITRW)
UNJAM TRANSITION (KWEEN5.UNJAM)

KWEEN FIVE DEPARTURE (RNAV)

(KWEEN5.KWEEN) 21MAR24

ALBEMARLE, NORTH CAROLINA
STANLY COUNTY (VUJ)

SE-2, 26 DEC 2024 to 23 JAN 2025

SE-2, 26 DEC 2024 to 23 JAN 2025