

WAAS CH 78317 W22A	APP CRS 223°	Rwy Idg TDZE Apt Elev	5499 584 609
--	------------------------	-----------------------------	---

RNAV (GPS) RWY 22L

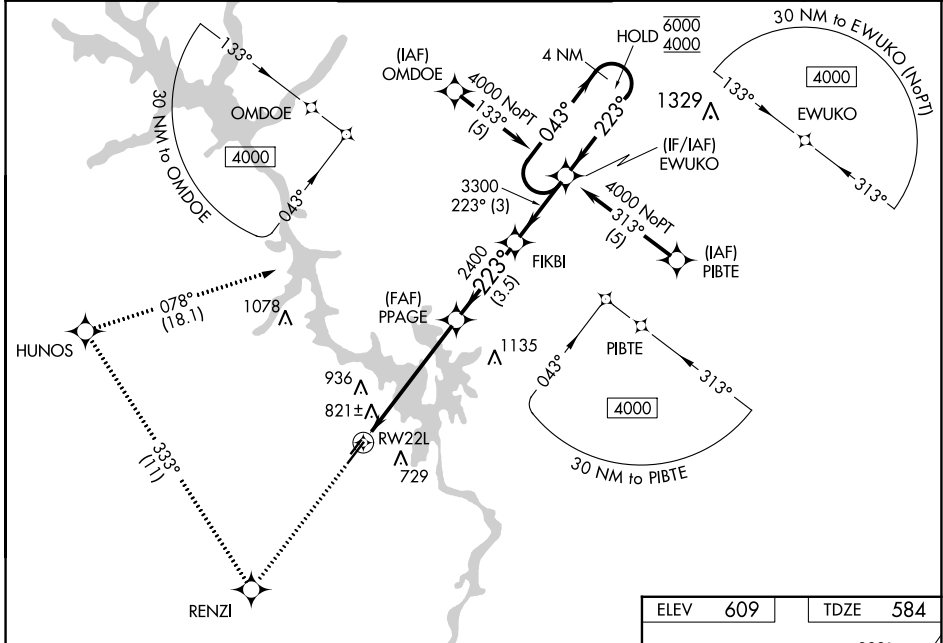
STANLY COUNTY (VUJ)

RNP APCH-GPS.

⚠ Circling Rwy 4L, 22R NA at night.
⚠ Rwy 22L helicopter visibility reduction below 3/4 SM NA.
PAR For uncompensated Baro-VNAV systems, LNAV/VNAV NA below -16°C or above 54°C.

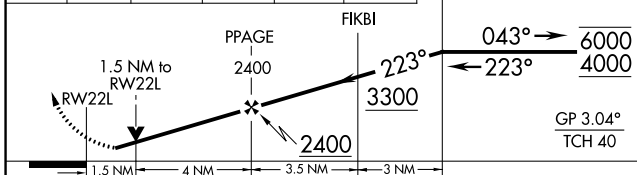
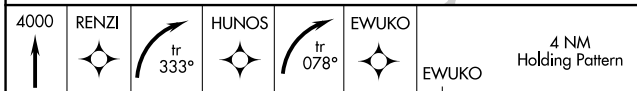
MISSED APPROACH: Climb to 4000 direct RENZI and right turn on track 333° to HUNOS and right turn on track 078° to EWUKO and hold.

AWOS-3 128.175	CHARLOTTE APP CON 128.325 307.8	STANLY COUNTY TOWER★ 126.275 (CTAF) 0 291.9	GND CON 121.75 254.375	CLNC DEL 121.75 254.375
--------------------------	---	---	----------------------------------	-----------------------------------

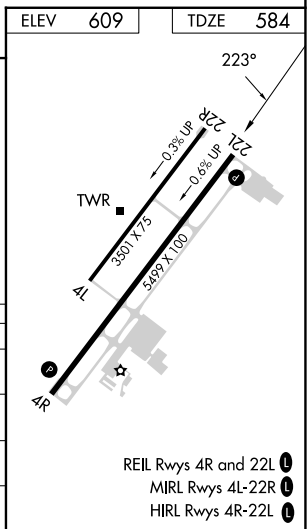


SE-2, 26 DEC 2024 to 23 JAN 2025

SE-2, 26 DEC 2024 to 23 JAN 2025



CATEGORY	A	B	C	D
LPV DA		919-1	335 (400-1)	
LNAV/VNAV DA		1272-2	688 (700-2)	
LNAV MDA	1100-1	516 (500-1)	1100-1 3/8	516 (500-1 1/2)
C CIRCLING	1260-1	651 (700-1)	1260-1 3/4	1380-2 1/2
			651 (700-1 3/4)	771 (800-2 1/2)



- REIL Rwys 4R and 22L **①**
- MIRL Rwys 4L-22R **②**
- HIRL Rwys 4R-22L **③**